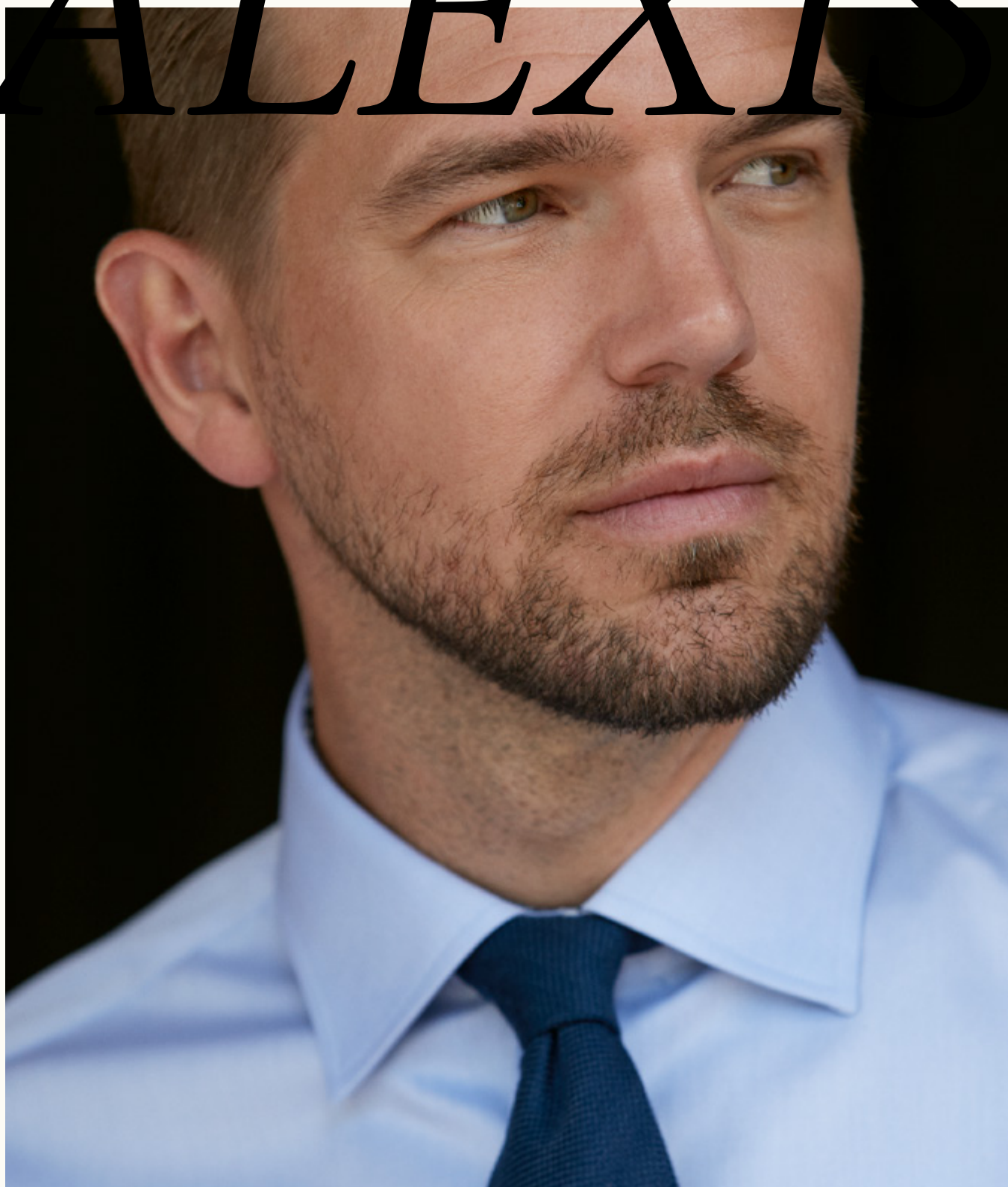


2018/2019

ERNST ALEXIS

# ERNST ALEXIS



- WE ARE SHIRTMAKERS -



# Aplared Sverige

Aplared, Sweden

## WE ARE SHIRTMAKERS

*Shirts have been made in Aplared for a long time. The classic textile tradition permeates the village. The old factory where Ernst Alexis currently has its studio, office, exhibition and picking warehouse was built in the early 1930s and has always been the centre of authentic and high quality shirt production.*

*In our heart, the old shirt factory in Aplared outside Borås, we develop our shirts based on textile traditions, modern materials and for a sustainable future. New models and fits are developed based on new demands and requests, which is where our knowledge of garments comes into its own. That is the way we like it, because you as a customer should be sure about and pleased with your choice of shirt. And that is also the way master tailor Ernst Alexis Pettersson would have liked it.*

*Welcome to Ernst Alexis!*

# MIXED COTTON

Attractive, hard wearing and easy care shirts in fabrics containing a blend of cotton and polyester. This gives these shirts a wonderful colour sheen. In our garments with stretch properties the cotton is mixed with elastane.

MIXED COTTON	6 - 27
STRETCH	28 - 31
COOLMAX	32 - 33

# PURE COTTON

Well-made range of high quality shirts in 100% cotton. The details, tail and fabrics are equally as attractive and smart as all the shirts in our collection.

PURE COTTON	34 - 49
PRINT	50 - 57
GARMENT WASH	58 - 67
EASYCARE	68 - 69
ORGANIC	70 - 77
NON IRON	78 - 83

# PREMIUM COTTON

Exclusive shirts with an extra high standard and in the finest selection of fabrics. Beautifully sewn and woven with Two Ply double twisted yarns. Fabric quality with Non-Iron finish.

PREMIUM COTTON	84 - 101
TWO PLY	84 - 101

TOP	102 - 105
-----	-----------

KNITWEAR	106 - 117
----------	-----------

ACCESSORIES TIE / HANKIE / SCARF	118 - 127
-------------------------------------	-----------

## PRODUCT INFORMATION

FITS	5
SIZING	128
CARE	129
PRODUCT INFORMATION	130
ITEM NO. INDEX	131





ERNST ALEXIS

# WAREHOUSES THAT CAN HANDLE QUICK DELIVERIES

*Ernst Alexis offers one of Scandinavia's largest stocked ranges of high quality shirts for both business and leisure. For both men and women.*





# *FITS FOR CHOICE!*

*All our garments are sewn with tight stitching and strong thread, which means they always last a long time. Beautifully made shirts for everyone, available in different models for fashionable wearers regardless of body shape. Choose between long or short sleeves and a fit of your own choice.*

## **SLIM FIT**

*An attractively tailored shirt with a slim fit cut that gives a closer-fitting feel. The slim fit shirt is a stylish and fitted model for those who want a narrower fit. It has a narrower sleeve and more tapered waist than our other fits. A modern shirt cut for narrower bodies.*

## **CONTEMPORARY FIT**

*A modern fit that sits between Classic Fit and Slim Fit. The contemporary shirt is ideal if you want a slightly closer fit that is not as tapered at the waist as a Slim Fit.*

## **CLASSIC FIT**

*This is the classic shirt model that is suitable for most situations, tastes and people. It is essentially a straight cut model. Suitable for anyone who does not want an overly close-fitting shirt. The sewn pleats in the back allow extra movement and excellent comfort across the back. In short, a versatile comfortable shirt.*

## **LADIES FIT**

*A carefully developed ladies shirt with a comfortable and modern cut. With the right cuts, this is an attractively designed shirt suitable for most women. The model is tapered at the waist with a slim fit and is available with or without a split yoke, shirts with a yoke are slightly wider across the bust. An attractive shirt that can be worn with most things.*

# MIXED COTTON



- WE ARE SHIRTMAKERS -

5890

MIXED COTTON

-00 -99



LADIES FIT



**MIXED COTTON POPLIN**

MATERIAL: 50% cotton 50% polyester. COLLAR: Normal cut away.  
DETAILS: Matching buttons.

**CLASSIC FIT** chest pocket, front placket  
**CONTEMPORARY FIT** no chest pocket, front placket  
**SLIM FIT** no chest pocket, front placket  
**LADIES FIT**

PRICE: sek 449 / nok 449 / dkk 359 / eur 49

sizes. 37/38 - 49/50  
sizes. 37/38 - 49/50  
sizes. 35/36 - 45/46  
sizes. 34 - 50

**5890**  
**5893**  
**5895**  
**6890**



ERNST ALEXIS



*- WE ARE SHIRTMAKERS -*





5085

MIXED COTTON

-00 -11 -21 -25 -27 -33 -38 -64 -67 -87 -99



LADIES FIT



**MIXED COTTON POPLIN**

MATERIAL: 55% cotton 45% polyester. COLLAR: Turn down.  
DETAILS: Matching buttons.

**CLASSIC FIT** chest pocket, front placket

**CONTEMPORARY FIT** no chest pocket, front placket, colours -00, -64, -99

**SLIM FIT** no chest pocket, colours -00, -11, -21, -25, -27, -38, -64, -87, -99

**LADIES FIT** with yoke

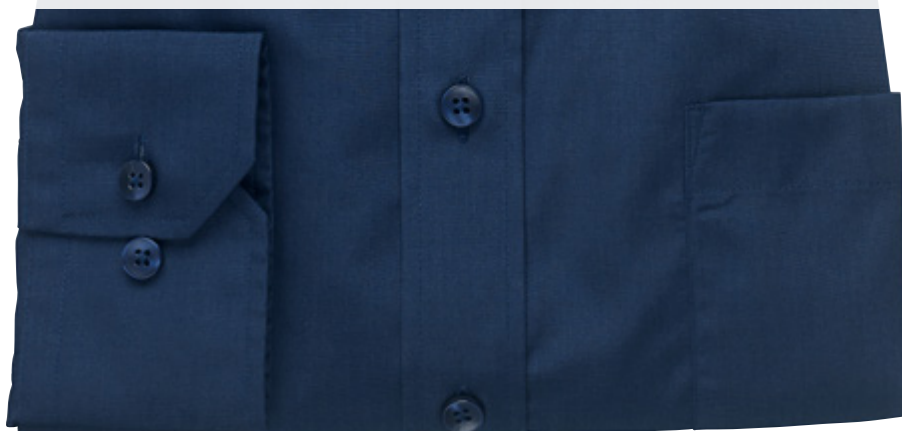
sizes. 35/36 - 49/50 **5085**

sizes. 37/38 - 49/50 **5087**

sizes. 35/36 - 45/46 **5090**

sizes. 34 - 50 **6085**

PRICE: sek 499 / nok 499 / dkk 399 / eur 55



# 5105

MIXED COTTON

-00

## PILOT SHIRT



SHORT SLEEVE



LADIES FIT



### MIXED COTTON POPLIN

MATERIAL: 55% cotton 45% polyester. COLLAR: Classic.

DETAILS: Epauletttes and two chest pockets with flaps. White buttons.

### LONG SLEEVE

CLASSIC FIT chest pocket, front placket

LADIES FIT with yoke

sizes. 35/36 - 49/50

sizes. 34 - 50

5105-00

6105-00

PRICE: sek 599 / nok 599 / dkk 479 / eur 65

### SHORT SLEEVE

CLASSIC FIT chest pocket, front placket

LADIES FIT with yoke

sizes. 35/36 - 49/50

sizes. 34 - 50

5106-00

6106-00

PRICE: sek 589 / nok 589 / dkk 469 / eur 64



*- WE ARE SHIRTMAKERS -*



ERNST ALEXIS



5960

MIXED COTTON

-99

# GRANDAD COLLAR



LADIES FIT

NEW!



**MIXED COTTON POPLIN**

MATERIAL: 55% cotton 45% polyester. COLLAR: Grandad.  
DETAILS: Matching buttons.

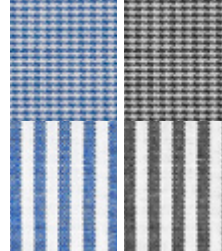
CLASSIC FIT chest pocket  
CONTEMPORARY FIT no chest pocket  
SLIM FIT no chest pocket  
LADIES FIT

PRICE: sek 499 / nok 499 / dkk 399 / eur 55

sizes. 37/38 - 49/50 **5960-99**  
sizes. 37/38 - 49/50 **5963-99**  
sizes. 35/36 - 45/46 **5965-99**  
sizes. 34 - 50 **6960-99**

# 5620

MIXED COTTON



-27/27

-99/99



Easy  
to  
Care



LADIES FIT



**MIXED COTTON POPLIN**

MATERIAL: 60% cotton 40% polyester. COLLAR: Turn down.

DETAILS: Contrasting small checks inner stand collar and inner cuffs.  
Matching buttons with white button thread.

CLASSIC FIT chest pocket

CONTEMPORARY FIT no chest pocket

SLIM FIT no chest pocket

LADIES FIT

sizes. 37/38 - 49/50

sizes. 37/38 - 49/50

sizes. 37/38 - 45/46

sizes. 34 - 50

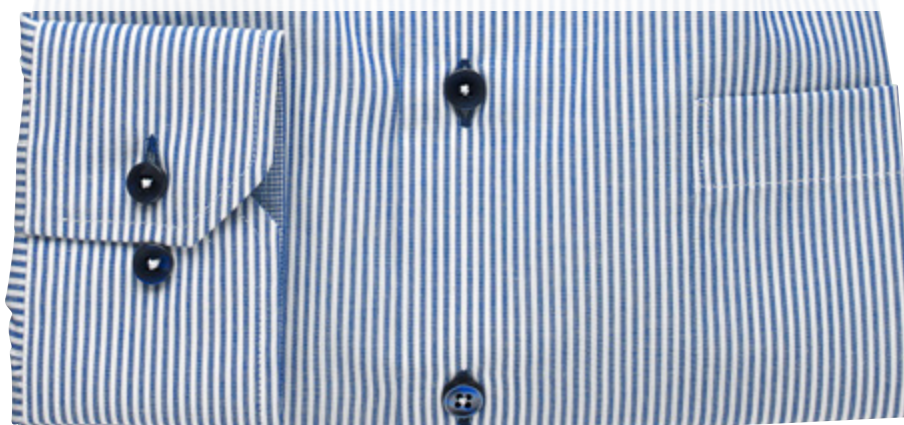
**5620**

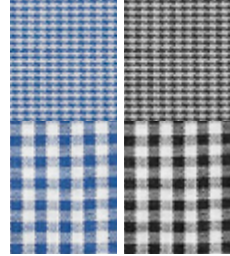
**5623**

**5625**

**6620**

PRICE: sek 549 / nok 549 / dkk 439 / eur 59





5630

MIXED COTTON

-27/27

-99/99



Easy to Care



LADIES FIT



**MIXED COTTON POPLIN**

MATERIAL: 60% cotton 40% polyester. COLLAR: Turn down.

DETAILS: Contrasting small checks inner stand collar and inner cuffs. Matching buttons with white button thread.

**CLASSIC FIT** chest pocket

**CONTEMPORARY FIT** no chest pocket

**SLIM FIT** no chest pocket

**LADIES FIT**

sizes. 37/38 - 49/50

**5630**

sizes. 37/38 - 49/50

**5633**

sizes. 37/38 - 45/46

**5635**

sizes. 34 - 50

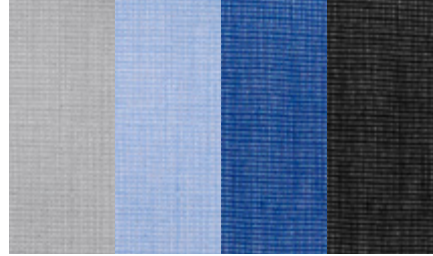
**6630**

PRICE: sek 549 / nok 549 / dkk 439 / eur 59



# 5095

MIXED COTTON



-11

-21

-29

-99



Easy  
to  
Care



LADIES FIT

**NEW!**  
CONTEMPORARY FIT



**MIXED COTTON END ON END**

MATERIAL: 60% cotton 40% polyester. COLLAR: Classic cut away.  
DETAILS: Matching buttons.

**CLASSIC FIT** chest pocket, front placket  
**CONTEMPORARY FIT** no chest pocket, front placket  
**SLIM FIT** no chest pocket  
**LADIES FIT** with yoke

PRICE: sek 499 / nok 499 / dkk 399 / eur 55

sizes. 37/38 - 49/50 **5095**

sizes. 37/38 - 49/50 **5102**

sizes. 37/38 - 45/46 **5098**

sizes. 34 - 50 **6095**







5100

MIXED COTTON

-00 -11 -21 -27



LADIES FIT



ERNST ALEXIS  
*Optimal Fit*  
BASIC SHIRT

**MIXED COTTON OXFORD**

MATERIAL: 70% cotton 30% polyester. COLLAR: Button down.  
DETAILS: Matching buttons.

**CLASSIC FIT** chest pocket, front placket  
**CONTEMPORARY FIT** no chest pocket, front placket  
**SLIM FIT** no chest pocket, front placket  
**LADIES FIT** with yoke

sizes. 37/38 - 49/50 **5100**  
sizes. 37/38 - 49/50 **5102**  
sizes. 37/38 - 45/46 **5103**  
sizes. 34 - 50 **6100**

PRICE: sek 499 / nok 499 / dkk 399 / eur 55





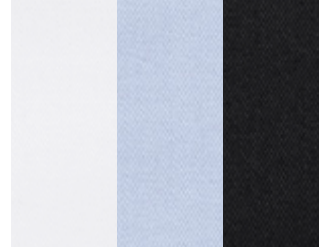
ERNST ALEXIS



*- WE ARE SHIRTMAKERS -*

5760

MIXED COTTON



-00

-21

-99



LADIES FIT



**MIXED COTTON TWILL**

MATERIAL: 80% cotton 20% polyester. COLLAR: Normal cut away.

DETAILS: White buttons on colours -00 and -21, grey buttons on colour -99.

**CLASSIC FIT** chest pocket, front placket

**CONTEMPORARY FIT** no chest pocket, front placket

**SLIM FIT** no chest pocket, front placket

**LADIES FIT** with yoke

PRICE: sek 549 / nok 549 / dkk 439 / eur 59

sizes. 37/38 - 49/50 **5760**

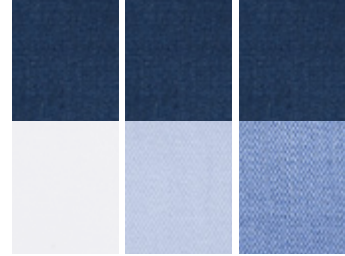
sizes. 37/38 - 49/50 **5763**

sizes. 35/36 - 45/46 **5765**

sizes. 34 - 50 **6760**

# 5800

MIXED COTTON



-00/27

-21/27

-25/27



Easy  
to  
Care



LADIES FIT



### MIXED COTTON TWILL

MATERIAL: 80% cotton 20% polyester. COLLAR: Normal cut away.

DETAILS: Dark blue contrast on inner stand collar and inner cuffs. Dark blue buttons with dark blue button thread and dark blue buttonholes.

CLASSIC FIT chest pocket, front placket  
CONTEMPORARY FIT no chest pocket, front placket  
SLIM FIT no chest pocket, front placket  
LADIES FIT with yoke

PRICE: sek 549 / nok 549 / dkk 439 / eur 59

sizes. 37/38 - 49/50 **5800**

sizes. 37/38 - 49/50 **5803**

sizes. 35/36 - 45/46 **5805**

sizes. 34 - 50 **6800**





5720

MIXED COTTON

-00/27

-21/27



LADIES FIT



**MIXED COTTON TWILL**

MATERIAL: 80% cotton 20% polyester. COLLAR: Normal cut away.

DETAILS: Patterned fabric inner stand collar, inner cuffs and inner placket, white buttons with dark blue button thread.

**CLASSIC FIT** chest pocket, front placket

**CONTEMPORARY FIT** no chest pocket, front placket

**SLIM FIT** no chest pocket, front placket

**LADIES FIT** with yoke

sizes. 37/38 - 49/50 **5720**

sizes. 37/38 - 49/50 **5723**

sizes. 35/36 - 45/46 **5725**

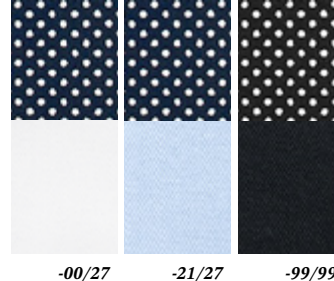
sizes. 34 - 50 **6720**

PRICE: sek 549 / nok 549 / dkk 439 / eur 59



# 5560

MIXED COTTON



Easy  
to  
Care



LADIES FIT



### MIXED COTTON TWILL

MATERIAL: 80% cotton 20% polyester. COLLAR: Classic cut away.

DETAILS: Polka dots contrast inner stand collar and inner cuffs. Matching buttons with contrasting button thread.

CLASSIC FIT chest pocket, front placket

CONTEMPORARY FIT no chest pocket, front placket

SLIM FIT no chest pocket, front placket

LADIES FIT

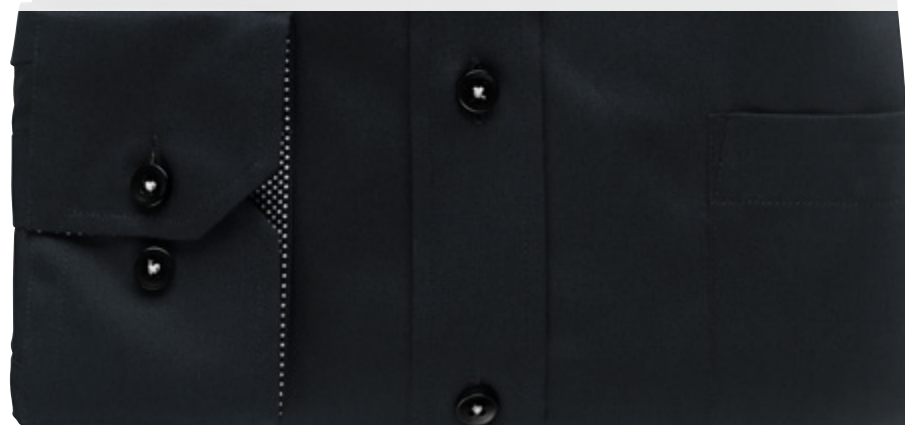
PRICE: sek 549 / nok 549 / dkk 439 / eur 59

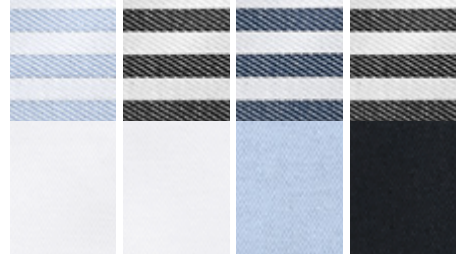
sizes. 37/38 - 49/50 **5560**

sizes. 37/38 - 49/50 **5563**

sizes. 37/38 - 45/46 **5565**

sizes. 34 - 50 **6560**





-00/21

-00/99

-21/27

-99/99

5270

MIXED COTTON



Easy  
to  
Care



LADIES FIT



**MIXED COTTON TWILL**

MATERIAL: 80% cotton 20% polyester. COLLAR: Classic cut away.

DETAILS: Striped contrast inner stand collar and inner cuffs. Matching buttons with red button thread and contrasting buttonholes.

CLASSIC FIT chest pocket, front placket

CONTEMPORARY FIT no chest pocket, front placket

SLIM FIT no chest pocket

LADIES FIT

PRICE: sek 549 / nok 549 / dkk 439 / eur 59

sizes. 37/38 - 49/50 **5270**

sizes. 37/38 - 49/50 **5273**

sizes. 37/38 - 45/46 **5275**

sizes. 34 - 50 **6270**



# 5300

MIXED COTTON



-00/99

-99/99



Easy  
to  
Care



LADIES FIT



### MIXED COTTON TWILL

MATERIAL: 80% cotton 20% polyester. COLLAR: Classic cut away.

DETAILS: Checked contrast inner stand collar, inner cuffs and inner placket.

Red button thread. Dark blue buttons and buttonholes on colours -00/27 and -21/27.  
Black buttons and buttonholes -00/99 and -99/99.

CLASSIC FIT chest pocket, front placket

SLIM FIT no chest pocket

LADIES FIT

sizes. 37/38 - 49/50

sizes. 37/38 - 45/46

sizes. 34 - 50

5300

5305

6300

PRICE: sek 549 / nok 549 / dkk 439 / eur 59







5300

MIXED COTTON

-00/27

-21/27



Easy  
to  
Care



LADIES FIT



**MIXED COTTON TWILL**

**MATERIAL:** 80% cotton 20% polyester. **COLLAR:** Classic cut away.

**DETAILS:** Checked contrast inner stand collar, inner cuffs and inner placket.

Red button thread. Dark blue buttons and buttonholes on colours -00/27 and -21/27.  
Black buttons and buttonholes -00/99 and -99/99.

**CLASSIC FIT** chest pocket, front placket

**SLIM FIT** no chest pocket

**LADIES FIT**

sizes. 37/38 - 49/50

sizes. 37/38 - 45/46

sizes. 34 - 50

**5300**

**5305**

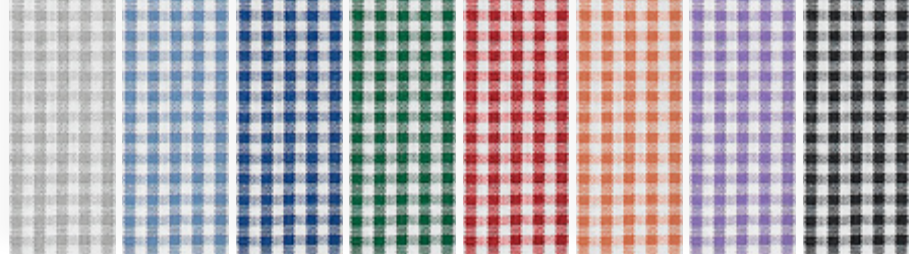
**6300**

**PRICE:** sek 549 / nok 549 / dkk 439 / eur 59



2050

MIXED COTTON



-11

-21

-27

-53

-64

-85

-87

-99

# WELL- MATCHED

*Our specially designed range of shirts for that extra thoughtful overall look. Matching details and complementary accessories that make the concept magnificent.*



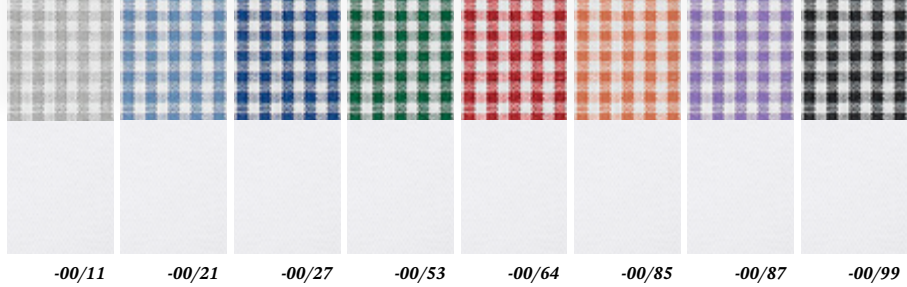
**HANKIE POPLIN**

MATERIAL: 60% cotton 40% polyester.

PRICE: sek 129 / nok 129 / dkk 103 / eur 12

sizes. 30 X 30 CM

**2050**



5370

MIXED COTTON



LADIES FIT



**MIXED COTTON TWILL**

MATERIAL: 80% cotton 20% polyester. COLLAR: Classic cut away.  
 DETAILS: Checked contrast inner stand collar, inner cuffs and inner placket.  
 White buttons with button thread in the shirt's contrast colour.

**CLASSIC FIT** chest pocket, front placket  
**SLIM FIT** no chest pocket  
**LADIES FIT**

sizes. 37/38 - 49/50  
 sizes. 37/38 - 45/46  
 sizes. 34 - 50

**5370**  
**5375**  
**6370**

PRICE: sek 549 / nok 549 / dkk 439 / eur 59





5520

MIXED COTTON

● STRETCH

-00

-99

# STRETCH



**MIXED COTTON STRETCH**

**MATERIAL:** 97% cotton 3% elastane. **COLLAR:** Extreme cut áway.

**DETAILS:** Matching buttons.

**NOTE:** Garments in stretch fabric can shrink by approx. 5% when washed.

**CLASSIC FIT** chest pocket, front placket

**CONTEMPORARY FIT** no chest pocket, front placket

**SLIM FIT** no chest pocket, front placket

**PRICE:** sek 599 / nok 599 / dkk 479 / eur 65

sizes. 37/38 - 49/50 **5520**

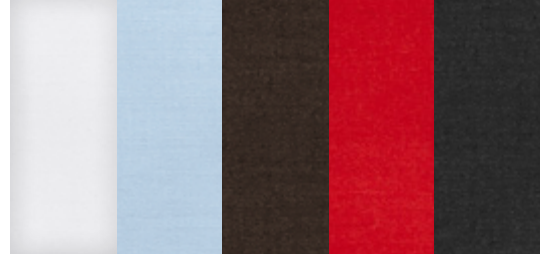
sizes. 37/38 - 49/50 **5523**

sizes. 37/38 - 45/46 **5525**

6110

MIXED COTTON

● STRETCH



-00 -21 -38 -64 -99

**STRETCH**



**MIXED COTTON STRETCH**

*MATERIAL: 97% cotton 3% elastane.*

*DETAILS: Matching buttons, no buttonhole at collar.*

*NOTE: Garments in stretch fabric can shrink by approx. 5% when washed.*

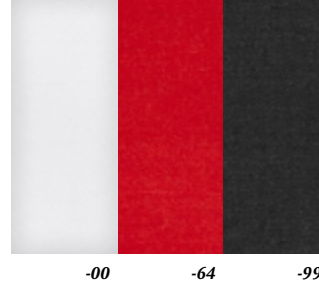
**LADIES FIT**

*PRICE: sek 599 / nok 599 / dkk 479 / eur 65*

*sizes. 34 - 50*

**6110**





6113

MIXED COTTON

● STRETCH

# STRETCH 3/4



**MIXED COTTON STRETCH**

MATERIAL: 97% cotton 3% elastane.

DETAILS: Matching buttons, no buttonhole at collar.

NOTE: Garments in stretch fabric can shrink by approx. 5% when washed.

**LADIES FIT 3/4 arm**

PRICE: sek 599 / nok 599 / dkk 479 / eur 65

sizes. 34 - 50

6113



# COOLMAX® EVERYDAY FABRIC

## **AN INTELLIGENT FABRIC THAT BREATHES.**

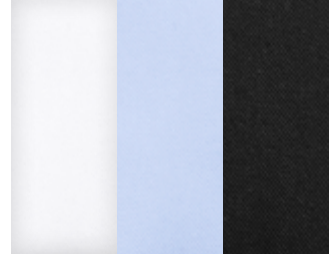
*The Coolmax® brand has revolutionised textile fabric since 1986 with innovative technical and functional benefits. Coolmax® is a technical fabric that is developed to keep the body dry and provide increased comfort. The soft and supple cloth is manufactured from treated polyester fibre with a special surface construction that wicks moisture away from the skin. In this way the moisture dries more quickly than with other fabrics and the body's temperature is regulated. We now introduce the most technical shirt from Ernst Alexis – a functional shirt with Coolmax®'s unique characteristics. These shirts are perfect for both work and leisure. And there is no risk of getting too hot if one overdoes it.*



- WE ARE SHIRTMAKERS -



COOL MAX®



5670

MIXED COTTON

● COOLMAX

-00 -21 -99



LADIES FIT



**MIXED COTTON COOL MAX / TWILL**

MATERIAL: 70% cotton 30% Coolmax polyester. COLLAR: Normal cut away.

DETAILS: White button on white and light blue shirt, grey button on black shirt.

**CLASSIC FIT** chest pocket, front placket

**CONTEMPORARY FIT** no chest pocket, front placket

**SLIM FIT** no chest pocket, front placket

**LADIES FIT** with yoke

PRICE: sek 599 / nok 599 / dkk 479 / eur 65

sizes. 37/38 - 49/50 **5670**

sizes. 37/38 - 49/50 **5673**

sizes. 35/36 - 45/46 **5675**

sizes. 34 - 50 **6670**

# PURE COTTON



- WE ARE SHIRTMAKERS -

5850

PURE COTTON

-21

# JACQUARD WOVEN



LADIES FIT



## PURE COTTON JACQUARD WOVEN

MATERIAL: 100% cotton. COLLAR: Normal cut away.

DETAILS: Navy blue buttons with navy blue button thread and navy blue buttonholes.

NOTE: Garments in jacquard may shrink up to 5 % in wash, especially sensitive in high centrifuge.

CLASSIC FIT chest pocket, front placket

CONTEMPORARY FIT no chest pocket, front placket

SLIM FIT no chest pocket, front placket

LADIES FIT with yoke

sizes. 37/38 - 49/50

sizes. 37/38 - 49/50

sizes. 35/36 - 45/46

sizes. 34 - 50

5850-21

5853-21

5855-21

6850-21

PRICE: sek 799 / nok 799 / dkk 639 / eur 87





**PURE COTTON TWILL**

*MATERIAL: 100% cotton. COLLAR: Extreme cut away.*

*DETAILS: Matching buttons. White buttons, button thread and buttonholes on colours -21. Dark blue buttons, button thread and buttonholes on colour -22.*

**CLASSIC FIT** chest pocket, front placket

sizes. 37/38 - 49/50 **5810**

**CONTEMPORARY FIT** no chest pocket, front placket

sizes. 37/38 - 49/50 **5813**

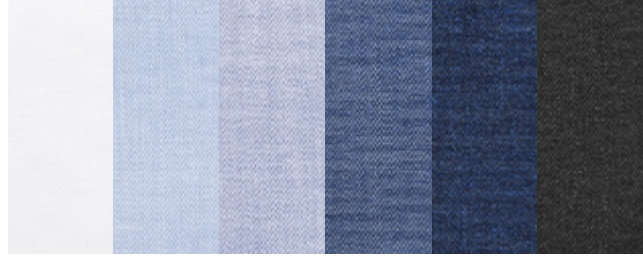
**SLIM FIT** no chest pocket, front placket

sizes. 35/36 - 45/56 **5815**

**LADIES FIT**

sizes. 34 - 50 **6810**

PRICE: sek 599 / nok 599 / dkk 479 / eur 65



5810

PURE COTTON

-00 -21 -22 -25 -27 -99



Easy  
to  
Care



LADIES FIT



**PURE COTTON TWILL**

MATERIAL: 100% cotton. COLLAR: Extreme cut áway.

DETAILS: Matching buttons. White buttons, button thread and buttonholes on colours -21. Dark blue buttons, button thread and buttonholes on colour -22.

**CLASSIC FIT** chest pocket, front placket

**CONTEMPORARY FIT** no chest pocket, front placket

**SLIM FIT** no chest pocket, front placket

**LADIES FIT**

sizes. 37/38 - 49/50 **5810**

sizes. 37/38 - 49/50 **5813**

sizes. 35/36 - 45/56 **5815**

sizes. 34 - 50 **6810**

PRICE: sek 599 / nok 599 / dkk 479 / eur 65

# 5350

PURE COTTON



-21



Easy  
to  
Care



LADIES FIT



ERNST ALEXIS  
LEISURE

**PURE COTTON TWILL**

MATERIAL: 100% cotton. COLLAR: Button down.  
DETAILS: White buttons.

CLASSIC FIT chest pocket, front placket  
SLIM FIT no chest pocket  
LADIES FIT

sizes. 37/38 - 49/50  
sizes. 37/38 - 45/46  
sizes. 34 - 50

**5350-21**  
**5355-21**  
**6350-21**

PRICE: sek 699 / nok 699 / dkk 559 / eur 76



5730

PURE COTTON



-00/27



LADIES FIT



**PURE COTTON TWILL**

MATERIAL: 100% cotton. COLLAR: Normal cut away.

DETAILS: Blue contrast inner stand collar and inner cuffs. White buttons with dark blue button thread and buttonholes.

**CLASSIC FIT** chest pocket, front placket

**CONTEMPORARY FIT** no chest pocket, front placket

**SLIM FIT** no chest pocket, front placket

**LADIES FIT** with yoke

sizes. 37/38 - 49/50

sizes. 37/38 - 49/50

sizes. 35/36 - 45/46

sizes. 34 - 50

**5730-00/27**

**5733-00/27**

**5735-00/27**

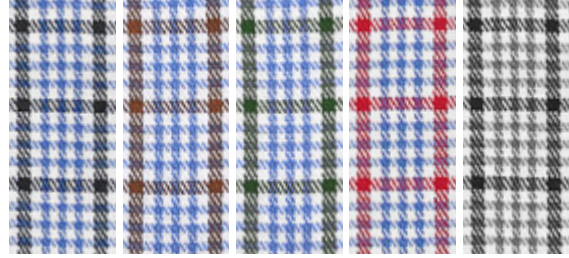
**6730-00/27**

PRICE: sek 699 / nok 699 / dkk 559 / eur 76



# 5460

PURE COTTON



-27

-33

-53

-64

-99



LADIES FIT



### PURE COTTON TWILL

MATERIAL: 100% cotton. COLLAR: Classic cut away.

DETAILS: White buttons with matching button thread and buttonhole in the shirt's colour.

CLASSIC FIT chest pocket

SLIM FIT no chest pocket

LADIES FIT

sizes. 37/38 - 49/50

sizes. 37/38 - 45/46

sizes. 34 - 50

5460

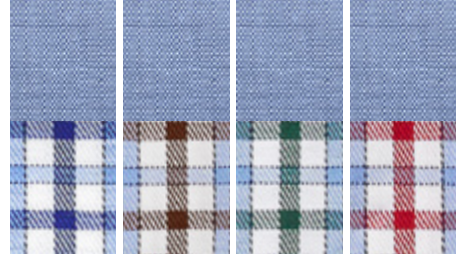
5465

6460

PRICE: sek 599 / nok 599 / dkk 479 / eur 65







-27/27

-33/27

-53/27

-64/27

5470

PURE COTTON



LADIES FIT



**PURE COTTON TWILL**

MATERIAL: 100% cotton. COLLAR: Extreme cut away.

DETAILS: Blue contrast inner stand collar and inner cuffs. White buttons with matching button thread in the shirt's colour.

CLASSIC FIT chest pocket

SLIM FIT no chest pocket

LADIES FIT

sizes. 37/38 - 49/50

sizes. 37/38 - 45/46

sizes. 34 - 50

5470

5475

6470

PRICE: sek 599 / nok 599 / dkk 479 / eur 65



# 5450

PURE COTTON



-27/27

-53/27

-64/27



Easy  
to  
Care



LADIES FIT



### PURE COTTON OXFORD

MATERIAL: 100% cotton. COLLAR: Extreme cut away.

DETAILS: Blue contrast inner stand collar and inner cuffs. Dark blue buttons with button thread in the shirt's colour.

CLASSIC FIT chest pocket

SLIM FIT no chest pocket

LADIES FIT

sizes. 37/38 - 49/50

sizes. 37/38 - 45/46

sizes. 34 - 50

5450

5455

6450

PRICE: sek 699 / nok 699 / dkk 559 / eur 76





-21/21

-27/27

# 5400

PURE COTTON



Easy  
to  
Care



LADIES FIT



**PURE COTTON OXFORD**

MATERIAL: 100% cotton. COLLAR: Extreme cut away.

DETAILS: Matching blue contrast inner stand collar, inner cuffs, inner triangle and inner placket. White buttons with matching blue button thread.

CLASSIC FIT chest pocket

SLIM FIT no chest pocket

LADIES FIT

sizes. 37/38 - 49/50

sizes. 37/38 - 45/46

sizes. 34 - 50

**5400**

**5405**

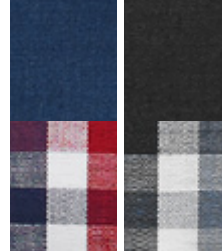
**6400**

PRICE: sek 699 / nok 699 / dkk 559 / eur 76



# 7010

PURE COTTON



-27/27

-99/99



Easy  
to  
Care



LADIES FIT



### PURE COTTON POPLIN

MATERIAL: 100% cotton. COLLAR: Classic cut away.

DETAILS: Matching buttons, button thread in the colour of the shirt with contrast inner stand collar and inner cuffs.

CLASSIC FIT chest pocket

SLIM FIT no chest pocket

LADIES FIT

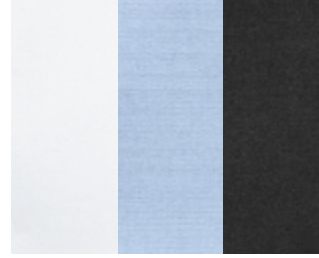
PRICE: sek 499 / nok 499 / dkk 399 / eur 55

sizes. 37/38 - 49/50 **7010**

sizes. 37/38 - 45/46 **7015**

sizes. 34 - 50 **8010**





7000

PURE COTTON

-00 -21 -99



LADIES FIT



**PURE COTTON POPLIN**  
MATERIAL: 100% cotton. COLLAR: Classic cut away.  
DETAILS: Matching buttons.

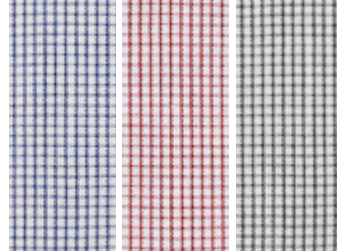
**CLASSIC FIT** chest pocket, front placket  
**SLIM FIT** no chest pocket  
**LADIES FIT**

PRICE: sek 499 / nok 499 / dkk 399 / eur 55

sizes. 37/38 - 49/50  
sizes. 37/38 - 45/46  
sizes. 34 - 50  
**7000**  
**7005**  
**8000**

# 5490

PURE COTTON



-27

-64

-99



Easy  
to  
Care



LADIES FIT



### PURE COTTON POPLIN

MATERIAL: 100% cotton. COLLAR: Extreme cut away.

DETAILS: White buttons with matching button thread and buttonhole in the shirt's colour. Also collar button and one button in the cuff with white button thread.

CLASSIC FIT chest pocket

SLIM FIT no chest pocket

LADIES FIT

sizes. 37/38 - 49/50

sizes. 37/38 - 45/46

sizes. 34 - 50

5490

5495

6490

PRICE: sek 599 / nok 599 / dkk 479 / eur 65



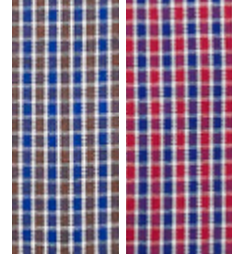


ERNST ALEXIS



# 5480

PURE COTTON



-33

-64



Easy  
to  
Care



LADIES FIT



**PURE COTTON POPLIN**

MATERIAL: 100% cotton. COLLAR: Extreme cut away.

DETAILS: White buttons with dark blue button thread and dark blue buttonholes. Collar button and one button in the cuff in dark blue with white button thread.

CLASSIC FIT chest pocket

SLIM FIT no chest pocket

LADIES FIT

PRICE: sek 599 / nok 599 / dkk 479 / eur 65

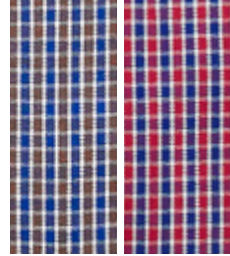
sizes. 37/38 - 49/50 **5480**

sizes. 37/38 - 45/46 **5485**

sizes. 34 - 50 **6480**







-33

-64

# 5480

PURE COTTON



Easy  
to  
Care



LADIES FIT



**PURE COTTON POPLIN**

MATERIAL: 100% cotton. COLLAR: Extreme cut away.

DETAILS: White buttons with dark blue button thread and dark blue buttonholes.  
Collar button and one button in the cuff in dark blue with white button thread.

CLASSIC FIT chest pocket

SLIM FIT no chest pocket

LADIES FIT

PRICE: sek 599 / nok 599 / dkk 479 / eur 65

sizes. 37/38 - 49/50 **5480**

sizes. 37/38 - 45/46 **5485**

sizes. 34 - 50 **6480**





ERNST ALEXIS





5930

PURE COTTON

● PRINT

-27

# PRINT



Easy to Care



LADIES FIT

NEW!



**PURE COTTON PRINT / POPLIN**

MATERIAL: 100% cotton. COLLAR: Modern cut áway.  
DETAILS: Matching buttons.

CLASSIC FIT chest pocket  
CONTEMPORARY FIT no chest pocket  
SLIM FIT no chest pocket  
LADIES FIT

PRICE: sek 799 / nok 799 / dkk 639 / eur 87

sizes: 37/38 - 49/50 **5930-27**

sizes: 37/38 - 49/50 **5933-27**

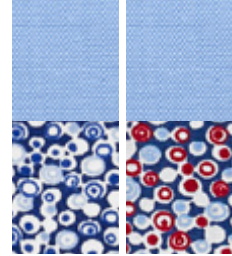
sizes: 35/36 - 45/46 **5935-27**

sizes: 34 - 50 **6930-27**

# 5710

PURE COTTON

● PRINT



-27/21

-64/21

## PRINT



Easy  
to  
Care



LADIES FIT



### PURE COTTON PRINT / POPLIN

MATERIAL: 100% cotton. COLLAR: Extreme cut away.

DETAILS: Light blue contrast inner stand collar and inner cuffs. Dark blue button.

CLASSIC FIT chest pocket

CONTEMPORARY FIT no chest pocket

SLIM FIT no chest pocket

LADIES FIT with yoke

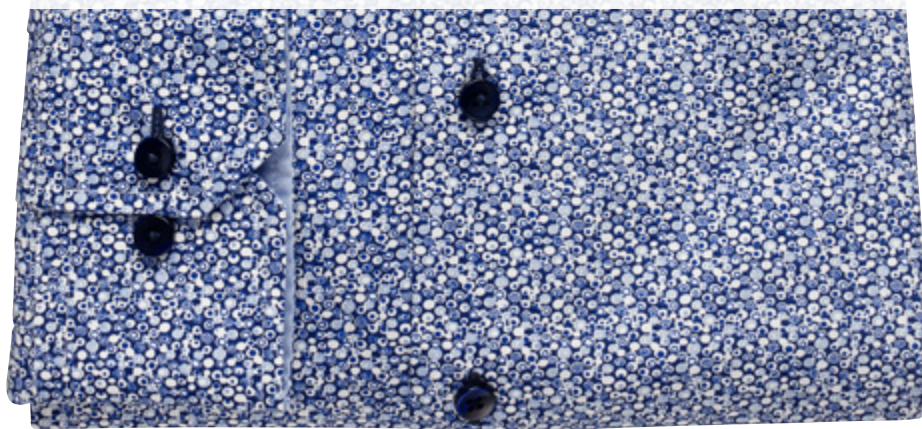
PRICE: sek 799 / nok 799 / dkk 639 / eur 87

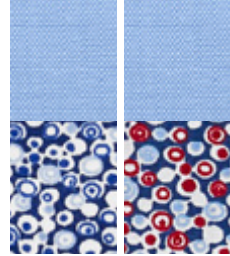
sizes. 37/38 - 49/50 **5710**

sizes. 37/38 - 49/50 **5713**

sizes. 35/36 - 45/46 **5715**

sizes. 34 - 50 **6710**





-27/21

-64/21

5710

PURE COTTON

● PRINT

# PRINT



Easy  
to  
Care



LADIES FIT



**PURE COTTON PRINT / POPLIN**

MATERIAL: 100% cotton. COLLAR: Extreme cut away.

DETAILS: Light blue contrast inner stand collar and inner cuffs. Dark blue button.

**CLASSIC FIT** chest pocket

**CONTEMPORARY FIT** no chest pocket

**SLIM FIT** no chest pocket

**LADIES FIT** with yoke

PRICE: sek 799 / nok 799 / dkk 639 / eur 87

sizes. 37/38 - 49/50 **5710**

sizes. 37/38 - 49/50 **5713**

sizes. 35/36 - 45/46 **5715**

sizes. 34 - 50 **6710**



# 5540

PURE COTTON

● PRINT



-27

## PRINT



Easy  
to  
Care



LADIES FIT



### PURE COTTON PRINT / POPLIN

MATERIAL: 100% cotton. COLLAR: Extreme cut away.  
DETAILS: Dark blue buttons with white button thread.

CLASSIC FIT chest pocket

SLIM FIT no chest pocket

LADIES FIT

PRICE: sek 799 / nok 799 / dkk 639 / eur 87

sizes. 37/38 - 49/50

sizes. 37/38 - 45/46

sizes. 34 - 50

5540-27

5545-27

6540-27



5530

PURE COTTON

● PRINT

-00/21

# PRINT



LADIES FIT



**PURE COTTON PRINT / POPLIN**

MATERIAL: 100% cotton. COLLAR: Extreme cut away.

DETAILS: White buttons with dark blue button thread. Light blue contrast inner stand collar and inner cuffs.

CLASSIC FIT chest pocket

SLIM FIT no chest pocket

LADIES FIT

PRICE: sek 799 / nok 799 / dkk 639 / eur 87

sizes. 37/38 - 49/50

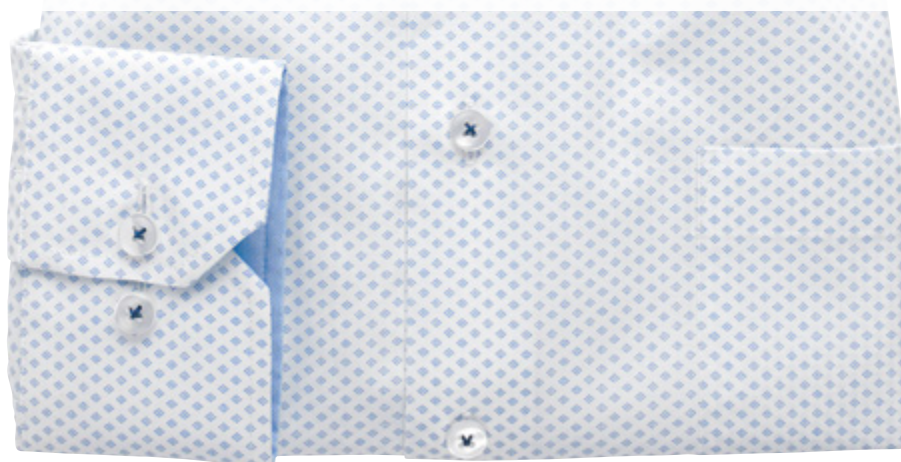
sizes. 37/38 - 45/46

sizes. 34 - 50

5530-00/21

5535-00/21

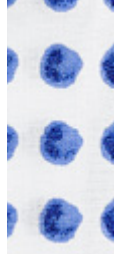
6530-00/21



5840

PURE COTTON

● PRINT



-00

# PRINT



Easy to Care



LADIES FIT



ERNST ALEXIS  
CONTEMPORARY FIT

**PURE COTTON PRINT / POPLIN**

MATERIAL: 100% cotton. COLLAR: Small cut away.

DETAILS: Navy blue button with navy blue button thread and white buttonhole.

CLASSIC FIT chest pocket

CONTEMPORARY FIT no chest pocket

SLIM FIT no chest pocket

LADIES FIT

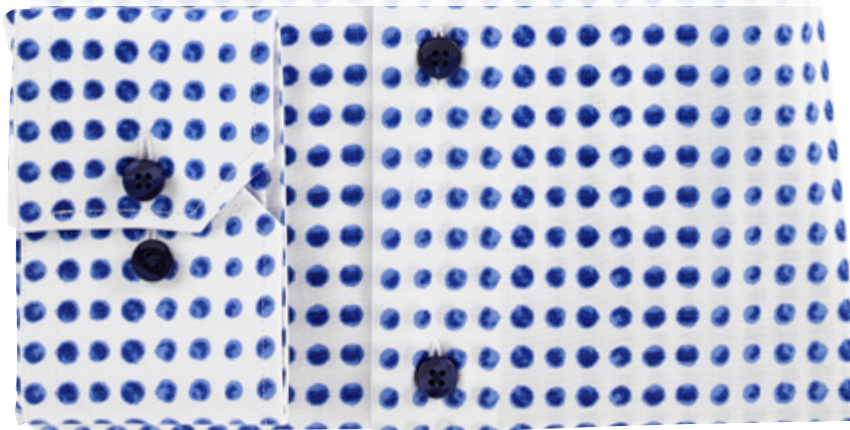
PRICE: sek 799 / nok 799 / dkk 639 / eur 87

sizes. 37/38 - 49/50 **5840-00**

sizes. 37/38 - 49/50 **5843-00**

sizes. 35/36 - 45/46 **5845-00**

sizes. 34 - 50 **6840-00**







5690

PURE COTTON

PRINT

-27

# PRINT / GARMENT WASH



LADIES FIT



**PURE COTTON PRINT / POPLIN**

MATERIAL: 100% cotton. COLLAR: Small cut away.

DETAILS: White button with white buttonhole and dark blue button thread.

**CLASSIC FIT** chest pocket

**CONTEMPORARY FIT** no chest pocket

**SLIM FIT** no chest pocket

**LADIES FIT** with yoke

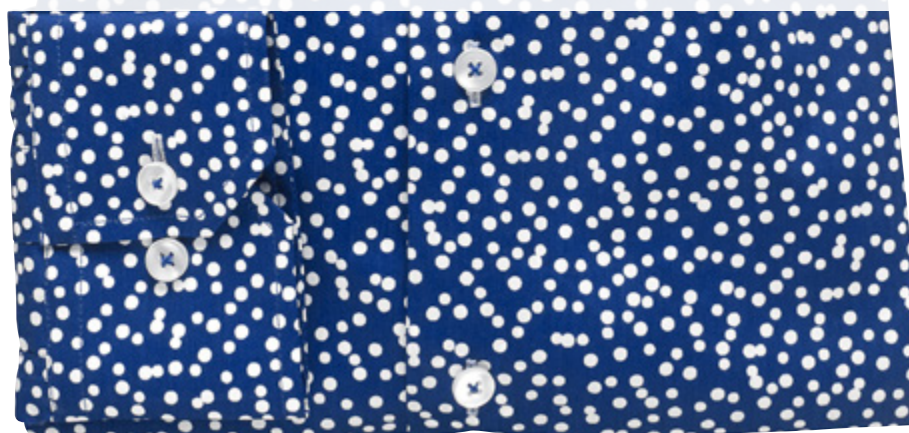
PRICE: sek 799 / nok 799 / dkk 639 / eur 87

sizes. 37/38 - 49/50 **5690-27**

sizes. 37/38 - 49/50 **5693-27**

sizes. 35/36 - 45/46 **5695-27**

sizes. 34 - 50 **6690-27**



To make our Print + Garment wash shirt model more comfortable and supple, we wash them before we fold them.





5950

PURE COTTON

GARMENT WASH

-21

# GARMENT WASH



Easy to Care



LADIES CASUAL FIT

NEW!



**PURE COTTON** GARMENT WASH / OXFORD

MATERIAL: Garment washed, 100% cotton. COLLAR: Small button down.  
DETAILS: White buttons.

**CLASSIC FIT** chest pocket, front placket

**CONTEMPORARY FIT** no chest pocket, front placket

**SLIM FIT** no chest pocket, front placket

**LADIES CASUAL FIT** with yoke

sizes. 37/38 - 49/50 **5950-21**

sizes. 37/38 - 49/50 **5953-21**

sizes. 35/36 - 45/46 **5955-21**

sizes. 34 - 50 **6950-21**

PRICE: sek 699 / nok 699 / dkk 559 / eur 76

To make our Garment wash shirt model more comfortable and supple, we wash them before we fold them.

ERNST ALEXIS / All our garments are manufactured using Öko-Tex Standard 100 certified fabrics and the Reach standard.

5740

PURE COTTON

GARMENT WASH



-00 -21 -27 -99

# GARMENT WASH



LADIES CASUAL FIT



**PURE COTTON GARMENT WASH / OXFORD**

MATERIAL: Garment washed, 100% cotton. COLLAR: Small button down.  
DETAILS: Off-white buttons.

**CLASSIC FIT** chest pocket, front placket  
**CONTEMPORARY FIT** no chest pocket, front placket  
**SLIM FIT** no chest pocket, front placket  
**LADIES CASUAL FIT** with yoke

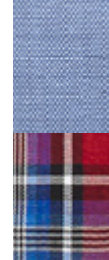
sizes. 37/38 - 49/50 **5740**  
sizes. 37/38 - 49/50 **5743**  
sizes. 35/36 - 45/46 **5745**  
sizes. 34 - 50 **6740**

PRICE: sek 699 / nok 699 / dkk 559 / eur 76



To make our Garment wash shirt model more comfortable and supple, we wash them before we fold them.

ERNST ALEXIS / All our garments are manufactured using Öko-Tex Standard 100 certified fabrics and the Reach standard.



5500

PURE COTTON

GARMENT WASH

-64/27

# GARMENT WASH



LADIES FIT

NEW!

CONTEMPORARY FIT



**PURE COTTON GARMENT WASH / POPLIN**

MATERIAL: Garment washed, 100% cotton. COLLAR: Small button down.

DETAILS: Dark blue buttons with red button thread, light blue contrast inner collar stand, inner cuffs and inner placket.

CLASSIC FIT chest pocket, front placket

CONTEMPORARY FIT no chest pocket, front placket

SLIM FIT no chest pocket, front placket

LADIES FIT

sizes. 37/38 - 49/50

sizes. 37/38 - 49/50

sizes. 37/38 - 45/46

sizes. 34 - 50

5500-64/27

5503-64/27

5505-64/27

6500-64/27

PRICE: sek 699 / nok 699 / dkk 559 / eur 76



To make our Garment wash shirt model more comfortable and supple, we wash them before we fold them.

ERNST ALEXIS / All our garments are manufactured using Öko-Tex Standard 100 certified fabrics and the Reach standard.



ERNST ALEXIS



5940

PURE COTTON

GARMENT WASH

-21

# GARMENT WASH



LADIES CASUAL FIT

NEW!



**PURE COTTON** GARMENT WASH / OXFORD

MATERIAL: *Garment washed, 100% cotton.* COLLAR: *Small cut away.*  
DETAILS: *Matching buttons.*

**CLASSIC FIT** chest pocket, front placket  
**CONTEMPORARY FIT** no chest pocket, front placket  
**SLIM FIT** no chest pocket, front placket  
**LADIES CASUAL FIT**

sizes. 37/38 - 49/50 **5940-21**  
sizes. 37/38 - 49/50 **5943-21**  
sizes. 35/36 - 45/46 **5945-21**  
sizes. 34 - 50 **6940-21**

PRICE: sek 699 / nok 699 / dkk 559 / eur 76

To make our Garment wash shirt model more comfortable and supple, we wash them before we fold them. The Denim shirts can vary in colour due to fading and the wash they have been through. Therefore one could say that each shirt is unique and differs in appearance from garment to garment.

# 5790

PURE COTTON

GARMENT WASH

To make our Garment wash shirt model more comfortable and supple, we wash them before we fold them. The Denim shirts can vary in colour due to fading and the wash they have been through. Therefore one could say that each shirt is unique and differs in appearance from garment to garment.



LADIES FIT



**PURE COTTON GARMENT WASH / TWILL**

MATERIAL: Garment washed, 100% cotton. COLLAR: Small button down.  
DETAILS: Off-white buttons on colour -20, -21. Grey buttons on colour -27.

**CLASSIC FIT** chest pocket, front placket

sizes. 37/38 - 49/50

5790

**CONTEMPORARY FIT** no chest pocket, front placket

sizes. 37/38 - 49/50

5793

**SLIM FIT** no chest pocket, front placket

sizes. 35/36 - 45/46

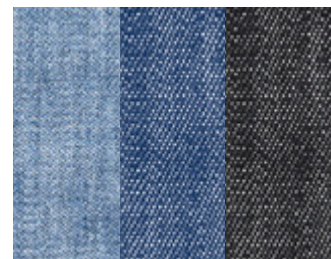
5795

**LADIES CASUAL FIT** with yoke

sizes. 34 - 50

6790

PRICE: sek 749 / nok 749 / dkk 599 / eur 82



-20

-21

-27



To make our Garment wash shirt model more comfortable and supple, we wash them before we fold them. The Denim shirts can vary in colour due to fading and the wash they have been through. Therefore one could say that each shirt is unique and differs in appearance from garment to garment.

5790

PURE COTTON

GARMENT WASH



LADIES FIT



LADIES FIT



**PURE COTTON GARMENT WASH / TWILL**

MATERIAL: Garment washed, 100% cotton. COLLAR: Small button down.

DETAILS: Off-white buttons on colour -20, -21. Grey buttons on colour -27.

**CLASSIC FIT** chest pocket, front placket

sizes. 37/38 - 49/50

5790

**CONTEMPORARY FIT** no chest pocket, front placket

sizes. 37/38 - 49/50

5793

**SLIM FIT** no chest pocket, front placket

sizes. 35/36 - 45/46

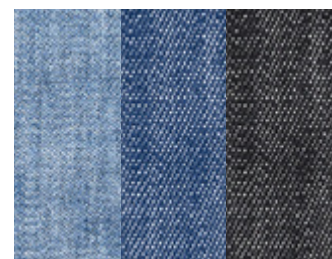
5795

**LADIES CASUAL FIT** with yoke

sizes. 34 - 50

6790

PRICE: sek 749 / nok 749 / dkk 599 / eur 82



-20

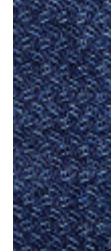
-21

-27

5860

PURE COTTON

GARMENT WASH



-27

# GARMENT WASH



Easy to Care



LADIES FIT



**PURE COTTON GARMENT WASH / DOBBY**

MATERIAL: 100% cotton. COLLAR: Small button down.

DETAILS: Off-white buttons with dark blue button thread and buttonhole.

**CLASSIC FIT** chest pocket

**CONTEMPORARY FIT** no chest pocket

**SLIM FIT** no chest pocket

**LADIES CASUAL FIT** with yoke

PRICE: sek 749 / nok 749 / dkk 599 / eur 82

sizes. 37/38 - 49/50 **5860-27**

sizes. 37/38 - 49/50 **5863-27**

sizes. 35/36 - 45/46 **5865-27**

sizes. 34 - 50 **6860-27**



To make our Garment wash shirt model more comfortable and supple, we wash them before we fold them.  
The shirts can vary in color due to the washing. Laundry creases may occur.

ERNST ALEXIS / All our garments are manufactured using Öko-Tex Standard 100 certified fabrics and the Reach standard.



- WE ARE SHIRTMAKERS -

# 5410

PURE COTTON

EASYCARE



-27/27

-64/27

## EASY CARE



LADIES FIT



### PURE COTTON EASY CARE / OXFORD

MATERIAL: 100% Easy Care finish cotton. COLLAR: Extreme cut away.

DETAILS: White buttons with dark blue button thread, Blue contrast inner collar stand, inner cuffs, triangle and inner placket.

CLASSIC FIT chest pocket

SLIM FIT no chest pocket

LADIES FIT

sizes. 37/38 - 49/50

sizes. 37/38 - 45/46

sizes. 34 - 50

5410

5415

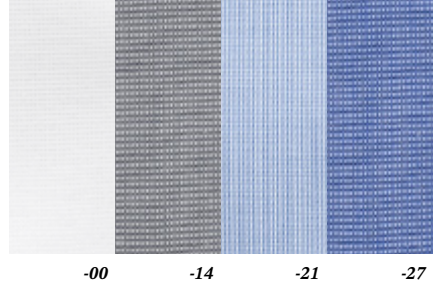
6410

PRICE: sek 699 / nok 699 / dkk 559 / eur 76



Because the shirt fabric receives a special treatment during manufacture which makes it extra easy to iron, it is called Care-finish. This means that the shirt fabric smoothes itself out and is even easier to care for if it is hung from a hanger after washing.

ERNST ALEXIS / All our garments are manufactured using Öko-Tex Standard 100 certified fabrics and the Reach standard.



-00                      -14                      -21                      -27

**5010**

PURE COTTON

EASY CARE

# EASY CARE



LADIES FIT



**PURE COTTON EASY CARE / DOBBY**

MATERIAL: 100% Easy Care finish cotton. COLLAR: City.  
DETAILS: White buttons.

**CLASSIC FIT chest pocket, front placket**

**SLIM FIT no chest pocket**

**LADIES FIT**

sizes. 37/38 - 49/50

sizes. 37/38 - 45/46

sizes. 34 - 50

**5010**

**5013**

**6010**

PRICE: sek 699 / nok 699 / dkk 559 / eur 76

*Because the shirt fabric receives a special treatment during manufacture which makes it extra easy to iron, it is called Care-finish. This means that the shirt fabric smoothes itself out and is even easier to care for if it is hung from a hanger after washing.*



ERNST ALEXIS



- WE ARE SHIRTMAKERS -

5185

PURE COTTON

ORGANIC

-00

-21



LADIES FIT



**PURE COTTON ORGANIC / OXFORD**

MATERIAL: 100% organic cotton. COLLAR: Classic cut away.  
DETAILS: Real mother of pearl buttons.

**CLASSIC FIT chest pocket**

**SLIM FIT no chest pocket**

**LADIES FIT**

sizes. 37/38 - 49/50

sizes. 37/38 - 45/46

sizes. 34 - 50

**5185**

**5190**

**6185**

PRICE: sek 999 / nok 999 / dkk 799 / eur 108



*In our Organic collection the cotton used in the fabrics is ecologically produced. From growing to sewing.  
Independent inspection bodies oversee the manufacture according to laws and regulations.  
For us it is a good way to accept our environmental responsibilities.*

5830

PURE COTTON

● ORGANIC



-27



Easy  
to  
Care



LADIES FIT



**PURE COTTON ORGANIC / POPLIN**

MATERIAL: 100% organic cotton. COLLAR: Normal cut away.

DETAILS: White button with blue button thread and white buttonhole.

**CLASSIC FIT** chest pocket

**CONTEMPORARY FIT** no chest pocket

**SLIM FIT** no chest pocket

**LADIES FIT**

PRICE: sek 999 / nok 999 / dkk 799 / eur 108

sizes. 37/38 - 49/50

**5830-27**

sizes. 37/38 - 49/50

**5833-27**

sizes. 35/36 - 45/46

**5835-27**

sizes. 34 - 50

**6830-27**

*In our Organic collection the cotton used in the fabrics is ecologically produced. From growing to sewing.  
Independent inspection bodies oversee the manufacture according to laws and regulations.  
For us it is a good way to accept our environmental responsibilities.*

ERNST ALEXIS / All our garments are manufactured using Öko-Tex Standard 100 certified fabrics and the Reach standard.





5830

PURE COTTON

ORGANIC

-27



LADIES FIT



**PURE COTTON ORGANIC / POPLIN**

MATERIAL: 100% organic cotton. COLLAR: Normal cut away.

DETAILS: White button with blue button thread and white buttonhole.

CLASSIC FIT chest pocket

CONTEMPORARY FIT no chest pocket

SLIM FIT no chest pocket

LADIES FIT

sizes. 37/38 - 49/50 **5830-27**

sizes. 37/38 - 49/50 **5833-27**

sizes. 35/36 - 45/46 **5835-27**

sizes. 34 - 50 **6830-27**

PRICE: sek 999 / nok 999 / dkk 799 / eur 108



*In our Organic collection the cotton used in the fabrics is ecologically produced. From growing to sewing. Independent inspection bodies oversee the manufacture according to laws and regulations. For us it is a good way to accept our environmental responsibilities.*

ERNST ALEXIS / All our garments are manufactured using Öko-Tex Standard 100 certified fabrics and the Reach standard.

5770

PURE COTTON

● ORGANIC



-00 -21



LADIES FIT



ERNST ALEXIS  
SLIM FIT

**PURE COTTON ORGANIC / DOBBY**

MATERIAL: 100% organic cotton. COLLAR: Normal cut away.  
DETAILS: White button.

**CLASSIC FIT** chest pocket  
**CONTEMPORARY FIT** no chest pocket  
**SLIM FIT** no chest pocket  
**LADIES FIT** with yoke

PRICE: sek 999 / nok 999 / dkk 799 / eur 108

sizes. 37/38 - 49/50 **5770**

sizes. 37/38 - 49/50 **5773**

sizes. 35/36 - 45/46 **5775**

sizes. 34 - 50 **6770**



*In our Organic collection the cotton used in the fabrics is ecologically produced. From growing to sewing. Independent inspection bodies oversee the manufacture according to laws and regulations. For us it is a good way to accept our environmental responsibilities.*

ERNST ALEXIS / All our garments are manufactured using Öko-Tex Standard 100 certified fabrics and the Reach standard.



5780

PURE COTTON

ORGANIC



-00

-21

-27



Easy to Care



LADIES FIT



**PURE COTTON ORGANIC / TWILL**

MATERIAL: 100% organic cotton. COLLAR: Normal cut away.

DETAILS: White button. Dark blue buttons, button thread and buttonholes on colour -27.

**CLASSIC FIT** chest pocket, front placket

**CONTEMPORARY FIT** no chest pocket, front placket

**SLIM FIT** no chest pocket, front placket

**LADIES FIT** with yoke

PRICE: sek 999 / nok 999 / dkk 799 / eur 108

sizes. 37/38 - 49/50 **5780**

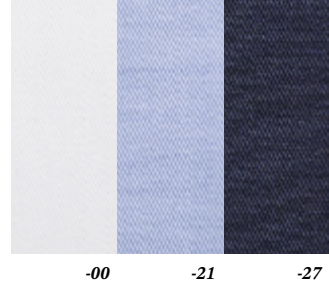
sizes. 37/38 - 49/50 **5783**

sizes. 35/36 - 45/46 **5785**

sizes. 34 - 50 **6780**

*In our Organic collection the cotton used in the fabrics is ecologically produced. From growing to sewing. Independent inspection bodies oversee the manufacture according to laws and regulations. For us it is a good way to accept our environmental responsibilities.*

ERNST ALEXIS / All our garments are manufactured using Öko-Tex Standard 100 certified fabrics and the Reach standard.



5780

PURE COTTON

ORGANIC



LADIES FIT



**PURE COTTON ORGANIC / TWILL**

MATERIAL: 100% organic cotton. COLLAR: Normal cut away.

DETAILS: White button. Dark blue buttons, button thread and buttonholes on colour -27.

**CLASSIC FIT** chest pocket, front placket

**CONTEMPORARY FIT** no chest pocket, front placket

**SLIM FIT** no chest pocket, front placket

**LADIES FIT** with yoke

PRICE: sek 999 / nok 999 / dkk 799 / eur 108

sizes. 37/38 - 49/50 **5780**

sizes. 37/38 - 49/50 **5783**

sizes. 35/36 - 45/46 **5785**

sizes. 34 - 50 **6780**

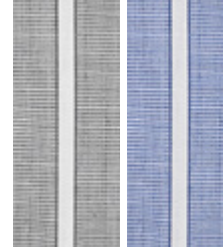


*In our Organic collection the cotton used in the fabrics is ecologically produced. From growing to sewing. Independent inspection bodies oversee the manufacture according to laws and regulations. For us it is a good way to accept our environmental responsibilities.*



ERNST ALEXIS





-14

-27

# 5155

PURE COTTON

NON IRON

## NON IRON



Non Iron



LADIES FIT



**PURE COTTON NON-IRON / POPLIN**  
MATERIAL: 100% cotton. COLLAR: Classic cut away.  
DETAILS: Matching buttons.

**CLASSIC FIT chest pocket**  
**SLIM FIT no chest pocket**  
**LADIES FIT**

sizes. 37/38 - 49/50  
sizes. 37/38 - 45/46  
sizes. 34 - 50

**5155**  
**5160**  
**6155**

PRICE: sek 699 / nok 699 / dkk 559 / eur 76



# 5310

PURE COTTON

NON IRON



-38

-64

## NON IRON



Non  
Iron



LADIES FIT



**PURE COTTON NON-IRON / POPLIN**

MATERIAL: 100% cotton. COLLAR: Classic cut away.

DETAILS: Dark blue buttons.

**CLASSIC FIT** chest pocket

**SLIM FIT** no chest pocket

**LADIES FIT**

sizes. 37/38 - 49/50

sizes. 37/38 - 45/46

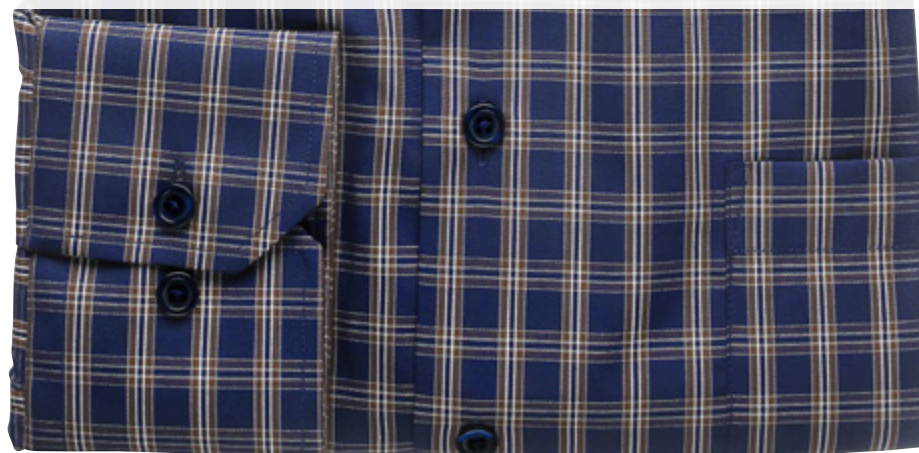
sizes. 34 - 50

**5310**

**5315**

**6310**

PRICE: sek 699 / nok 699 / dkk 559 / eur 76







-38

-64

5310

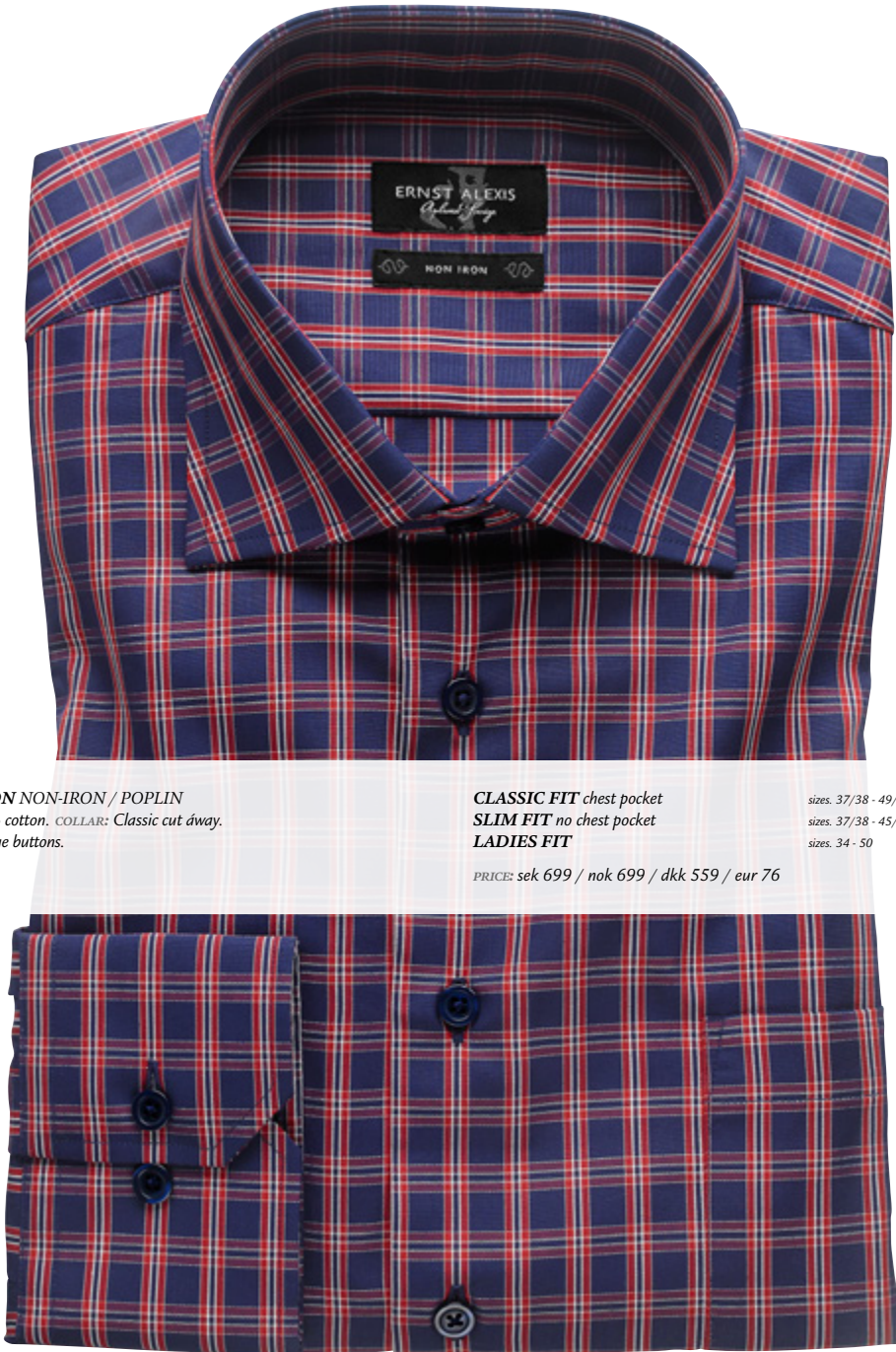
PURE COTTON

NON IRON

# NON IRON



LADIES FIT



**PURE COTTON NON-IRON / POPLIN**  
MATERIAL: 100% cotton. COLLAR: Classic cut away.  
DETAILS: Dark blue buttons.

**CLASSIC FIT** chest pocket  
**SLIM FIT** no chest pocket  
**LADIES FIT**

sizes. 37/38 - 49/50  
sizes. 37/38 - 45/46  
sizes. 34 - 50

**5310**  
**5315**  
**6310**

PRICE: sek 699 / nok 699 / dkk 559 / eur 76

5260

PURE COTTON

NON IRON



-00 -21

# NON IRON



LADIES FIT



**PURE COTTON NON-IRON / OXFORD**  
MATERIAL: 100% cotton. COLLAR: Classic cut away.  
DETAILS: Matching buttons.

**CLASSIC FIT** chest pocket, front placket  
**SLIM FIT** chest pocket  
**LADIES FIT**

sizes. 37/38 - 49/50  
sizes. 37/38 - 45/46  
sizes. 34 - 50

**5260**  
**5265**  
**6260**

PRICE: sek 749 / nok 749 / dkk 599 / eur 82

5115

PURE COTTON

NON IRON



-00

-21

-99

# NON IRON



LADIES FIT



**PURE COTTON NON-IRON / POPLIN**  
MATERIAL: 100% cotton. COLLAR: Classic cut away.  
DETAILS: Matching buttons.

**CLASSIC FIT** chest pocket, front placket  
**CONTEMPORARY FIT** no chest pocket, front placket  
**SLIM FIT** no chest pocket  
**LADIES FIT** with yoke

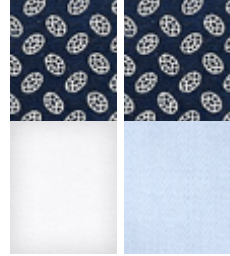
PRICE: sek 699 / nok 699 / dkk 559 / eur 76

sizes. 37/38 - 49/50 **5115**  
sizes. 37/38 - 49/50 **5118**  
sizes. 37/38 - 45/46 **5120**  
sizes. 34 - 50 **6115**

# PREMIUM COTTON



- WE ARE SHIRTMAKERS -



5640

PREMIUM COTTON

TWO PLY

-00/27

-21/27

# TWO PLY NON IRON



LADIES FIT



**PREMIUM COTTON TWO PLY / TWILL**

MATERIAL: 100% cotton. COLLAR: Classic cut away.

DETAILS: Dark blue contrast inner collar stand and inside cuff. White buttons with dark blue button thread. Dark blue collar buttonhole.

**CLASSIC FIT chest pocket, front placket**

**SLIM FIT no chest pocket, front placket**

**LADIES FIT**

sizes. 37/38 - 49/50

sizes. 37/38 - 45/46

sizes. 34 - 50

5640

5645

6640

PRICE: sek 799 / nok 799 / dkk 639 / eur 87



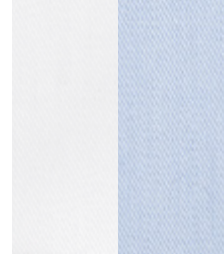
*Shirts woven with double twisted yarns are called Two Ply quality, which gives wonderful colour sheen. Beautifully sewn and in comfortable fits. Fabric quality with Non-Iron finish.*

ERNST ALEXIS / All our garments are manufactured using Öko-Tex Standard 100 certified fabrics and the Reach standard.

5900

PREMIUM COTTON

TWO PLY



-00 -21

# TWO PLY NON IRON



LADIES FIT

NEW!



**PURE COTTON TWO PLY / TWILL**  
MATERIAL: 100% cotton. COLLAR: Modern cut áway.  
DETAILS: White buttons.

**CLASSIC FIT** chest pocket  
**CONTEMPORARY FIT** no chest pocket  
**SLIM FIT** no chest pocket  
**LADIES FIT**

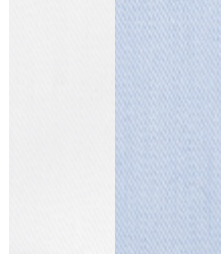
PRICE: sek 649 / nok 649 / dkk 519 / eur 71

sizes. 37/38 - 49/50 **5900**  
sizes. 37/38 - 49/50 **5903**  
sizes. 35/36 - 45/46 **5905**  
sizes. 34 - 50 **6900**



*Shirts woven with double twisted yarns are called Two Ply quality, which gives wonderful colour sheen.  
Beautifully sewn and in comfortable fits. Fabric quality with Non-Iron finish.*

ERNST ALEXIS / All our garments are manufactured using Öko-Tex Standard 100 certified fabrics and the Reach standard.



5900

PREMIUM COTTON

TWO PLY

-00 -21

# TWO PLY NON IRON



LADIES FIT

NEW!



**PURE COTTON TWO PLY / TWILL**  
MATERIAL: 100% cotton. COLLAR: Modern cut áway.  
DETAILS: White buttons.

**CLASSIC FIT** chest pocket  
**CONTEMPORARY FIT** no chest pocket  
**SLIM FIT** no chest pocket  
**LADIES FIT**

PRICE: sek 649 / nok 649 / dkk 519 / eur 71

sizes. 37/38 - 49/50 **5900**  
sizes. 37/38 - 49/50 **5903**  
sizes. 35/36 - 45/46 **5905**  
sizes. 34 - 50 **6900**

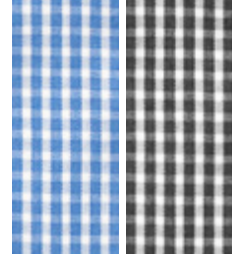


*Shirts woven with double twisted yarns are called Two Ply quality, which gives wonderful colour sheen.  
Beautifully sewn and in comfortable fits. Fabric quality with Non-Iron finish.*

5590

PREMIUM COTTON

TWO PLY



-21

-99

# TWO PLY NON IRON



Non  
Iron



LADIES FIT



**PREMIUM COTTON TWO PLY / POPLIN**

MATERIAL: 100% cotton. COLLAR: Small cut away.

DETAILS: Matching coloured button with white button thread.

CLASSIC FIT chest pocket, front placket

SLIM FIT no chest pocket, front placket

LADIES FIT

sizes. 37/38 - 49/50

sizes. 37/38 - 45/46

sizes. 34 - 50

5590

5595

6590

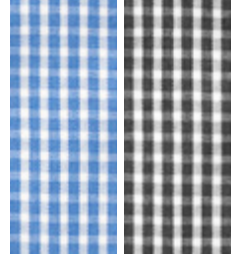
PRICE: sek 799 / nok 799 / dkk 639 / eur 87



*Shirts woven with double twisted yarns are called Two Ply quality, which gives wonderful colour sheen.  
Beautifully sewn and in comfortable fits. Fabric quality with Non-Iron finish.*

ERNST ALEXIS / All our garments are manufactured using Öko-Tex Standard 100 certified fabrics and the Reach standard.





-21

-99

5590

PREMIUM COTTON

TWO PLY

# TWO PLY NON IRON



Non  
Iron



LADIES FIT



**PREMIUM COTTON TWO PLY / POPLIN**

MATERIAL: 100% cotton. COLLAR: Small cut away.

DETAILS: Matching coloured button with white button thread.

CLASSIC FIT chest pocket, front placket

SLIM FIT no chest pocket, front placket

LADIES FIT

sizes. 37/38 - 49/50

sizes. 37/38 - 45/46

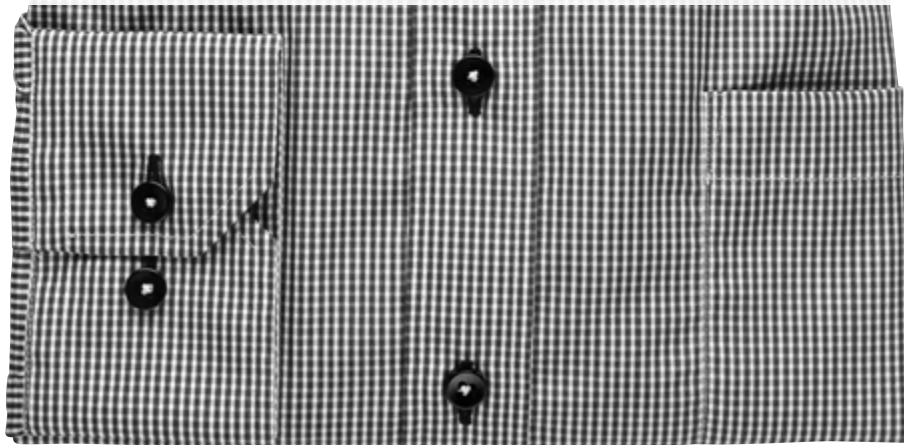
sizes. 34 - 50

5590

5595

6590

PRICE: sek 799 / nok 799 / dkk 639 / eur 87



*Shirts woven with double twisted yarns are called Two Ply quality, which gives wonderful colour sheen.  
Beautifully sewn and in comfortable fits. Fabric quality with Non-Iron finish.*



# TWO PLY NON IRON



**PREMIUM COTTON TWO PLY / TWILL**

MATERIAL: 100% cotton. COLLAR: Classic cut away.

DETAILS: White buttons with matching button thread in the shirt's colour.

**CLASSIC FIT** chest pocket

**CONTEMPORARY FIT** no chest pocket

**SLIM FIT** no chest pocket

**LADIES FIT**

PRICE: sek 799 / nok 799 / dkk 639 / eur 87

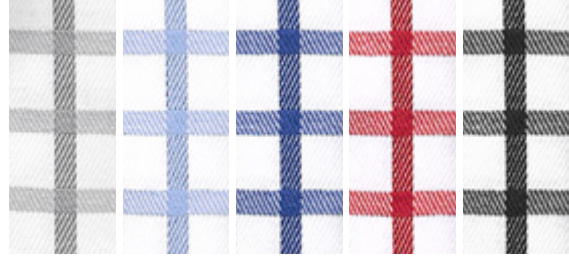
sizes. 37/38 - 49/50 **5205**

sizes. 37/38 - 49/50 **5207**

sizes. 37/38 - 45/46 **5210**

sizes. 34 - 50 **6205**

*Shirts woven with double twisted yarns are called Two Ply quality, which gives wonderful colour sheen.  
Beautifully sewn and in comfortable fits. Fabric quality with Non-Iron finish.*



5205

PREMIUM COTTON

TWO PLY



LADIES FIT



**PREMIUM COTTON TWO PLY / TWILL**

MATERIAL: 100% cotton. COLLAR: Classic cut away.

DETAILS: White buttons with matching button thread in the shirt's colour.

**CLASSIC FIT** chest pocket

**CONTEMPORARY FIT** no chest pocket

**SLIM FIT** no chest pocket

**LADIES FIT**

PRICE: sek 799 / nok 799 / dkk 639 / eur 87

sizes. 37/38 - 49/50 **5205**

sizes. 37/38 - 49/50 **5207**

sizes. 37/38 - 45/46 **5210**

sizes. 34 - 50 **6205**

*Shirts woven with double twisted yarns are called Two Ply quality, which gives wonderful colour sheen. Beautifully sewn and in comfortable fits. Fabric quality with Non-Iron finish.*

5390

PREMIUM COTTON

TWO PLY



-38

-64

# TWO PLY NON IRON



Non  
Iron



LADIES FIT



**PREMIUM COTTON TWO PLY / TWILL**

MATERIAL: 100% cotton. COLLAR: Extreme cut away.

DETAILS: White buttons with dark blue button thread and dark blue buttonholes.

**CLASSIC FIT chest pocket**

**SLIM FIT no chest pocket**

**LADIES FIT**

sizes. 37/38 - 49/50

sizes. 37/38 - 45/46

sizes. 34 - 50

**5390**

**5395**

**6390**

PRICE: sek 799 / nok 799 / dkk 639 / eur 87



*Shirts woven with double twisted yarns are called Two Ply quality, which gives wonderful colour sheen.  
Beautifully sewn and in comfortable fits. Fabric quality with Non-Iron finish.*

ERNST ALEXIS / All our garments are manufactured using Öko-Tex Standard 100 certified fabrics and the Reach standard.



- WE ARE SHIRTMAKERS -

5570

PREMIUM COTTON

TWO PLY



-00 -21

# TWO PLY / NON IRON STRIPE WOVEN



LADIES FIT



**PREMIUM COTTON TWO PLY / TWILL / STRIPE WOVEN**

MATERIAL: 100% cotton. COLLAR: Small cut away.

DETAILS: White buttons with dark blue button thread. Collar button and one button in the cuff in dark blue with white button thread (shirt -21 has a dark blue buttonhole)

**CLASSIC FIT chest pocket**

**SLIM FIT no chest pocket**

**LADIES FIT**

PRICE: sek 799 / nok 799 / dkk 639 / eur 87

sizes. 37/38 - 49/50

sizes. 37/38 - 45/46

sizes. 34 - 50

**5570**

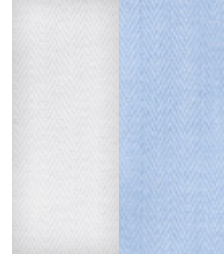
**5575**

**6570**



*Shirts woven with double twisted yarns are called Two Ply quality, which gives wonderful colour sheen. Beautifully sewn and in comfortable fits. Fabric quality with Non-Iron finish.*

ERNST ALEXIS / All our garments are manufactured using Öko-Tex Standard 100 certified fabrics and the Reach standard.



5580

PREMIUM COTTON

TWO PLY

-00 -21

# TWO PLY / NON IRON HERRINGBONE WOVEN



LADIES FIT



**PREMIUM COTTON TWO PLY / TWILL / HERRINGBONE WOVEN**  
MATERIAL: Herring bone pattern, 100% cotton. COLLAR: Extreme cut away.  
DETAILS: White buttons with dark blue button thread. Collar button and one button in the cuff in dark blue with white button thread and coloured buttonhole (-00 buttonhole: Red and -21 buttonhole: Dark blue).

**CLASSIC FIT** chest pocket, front placket  
**SLIM FIT** no chest pocket, front placket  
**LADIES FIT**

sizes. 37/38 - 49/50  
sizes. 37/38 - 45/46  
sizes. 34 - 50

**5580**  
**5585**  
**6580**

PRICE: sek 799 / nok 799 / dkk 639 / eur 87

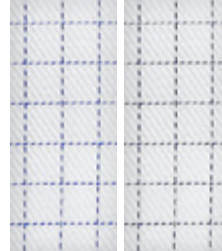


*Shirts woven with double twisted yarns are called Two Ply quality, which gives wonderful colour sheen. Beautifully sewn and in comfortable fits. Fabric quality with Non-Iron finish.*

5070

PREMIUM COTTON

TWO PLY



-27

-99

# TWO PLY NON IRON



Non  
Iron



LADIES FIT



**PREMIUM COTTON TWO PLY / TWILL**

MATERIAL: 100% cotton. COLLAR: City.  
DETAILS: White buttons.

**CLASSIC FIT chest pocket, front placket**

**SLIM FIT no chest pocket**

**LADIES FIT with yoke**

sizes. 37/38 - 49/50

sizes. 37/38 - 45/46

sizes. 34 - 50

**5070**

**5073**

**6070**

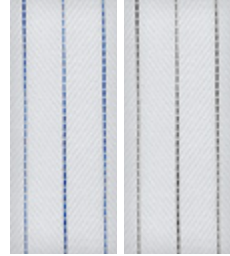
PRICE: sek 799 / nok 799 / dkk 639 / eur 87



*Shirts woven with double twisted yarns are called Two Ply quality, which gives wonderful colour sheen.  
Beautifully sewn and in comfortable fits. Fabric quality with Non-Iron finish.*

ERNST ALEXIS / All our garments are manufactured using Öko-Tex Standard 100 certified fabrics and the Reach standard.





5065

PREMIUM COTTON

TWO PLY

-27

-99

# TWO PLY NON IRON



LADIES FIT



**PREMIUM COTTON TWO PLY / TWILL**

MATERIAL: 100% cotton. COLLAR: City.  
DETAILS: White buttons.

**CLASSIC FIT** chest pocket, front placket

**SLIM FIT** no chest pocket

**LADIES FIT** with yoke

sizes. 37/38 - 49/50

sizes. 37/38 - 45/46

sizes. 34 - 50

5065

5068

6065

PRICE: sek 799 / nok 799 / dkk 639 / eur 87



*Shirts woven with double twisted yarns are called Two Ply quality, which gives wonderful colour sheen.  
Beautifully sewn and in comfortable fits. Fabric quality with Non-Iron finish.*

5220

PREMIUM COTTON

TWO PLY

 Non Iron



-21

 Non Iron



-27

 Non Iron



-64

 Non Iron



-99



5220

PREMIUM COTTON

TWO PLY

# TWO PLY NON IRON



LADIES FIT



**PREMIUM COTTON TWO PLY / TWILL**

MATERIAL: 100% cotton. COLLAR: Classic cut away.

DETAILS: White buttons with matching button thread in the shirt's colour.

**CLASSIC FIT** chest pocket

**CONTEMPORARY FIT** no chest pocket

**SLIM FIT** no chest pocket

**LADIES FIT**

PRICE: sek 799 / nok 799 / dkk 639 / eur 87

sizes. 37/38 - 49/50 **5220**

sizes. 37/38 - 49/50 **5223**

sizes. 37/38 - 45/46 **5225**

sizes. 34 - 50 **6220**

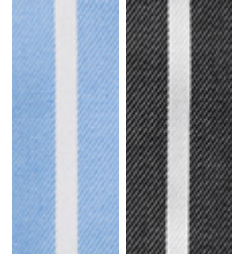


*Shirts woven with double twisted yarns are called Two Ply quality, which gives wonderful colour sheen. Beautifully sewn and in comfortable fits. Fabric quality with Non-Iron finish.*

5040

PREMIUM COTTON

TWO PLY



-21

-99

# TWO PLY NON IRON



LADIES FIT



**PREMIUM COTTON TWO PLY / TWILL**  
MATERIAL: 100% cotton. COLLAR: Classic cut away.  
DETAILS: Matching buttons.

**CLASSIC FIT** chest pocket  
**SLIM FIT** no chest pocket  
**LADIES FIT** with yoke

sizes. 37/38 - 49/50  
sizes. 37/38 - 45/46  
sizes. 34 - 50

**5040**  
**5045**  
**6040**

PRICE: sek 799 / nok 799 / dkk 639 / eur 87

*Shirts woven with double twisted yarns are called Two Ply quality, which gives wonderful colour sheen.  
Beautifully sewn and in comfortable fits. Fabric quality with Non-Iron finish.*

ERNST ALEXIS / All our garments are manufactured using Öko-Tex Standard 100 certified fabrics and the Reach standard.



5005

PREMIUM COTTON

TWO PLY

# TWO PLY NON IRON



LADIES FIT



**PREMIUM COTTON TWO PLY / TWILL**  
MATERIAL: 100% cotton. COLLAR: Classic cut away.  
DETAILS: Matching buttons.

**CLASSIC FIT** chest pocket, front placket  
**CONTEMPORARY FIT** no chest pocket, front placket  
**SLIM FIT** no chest pocket  
**LADIES FIT**

PRICE: sek 799 / nok 799 / dkk 639 / eur 87

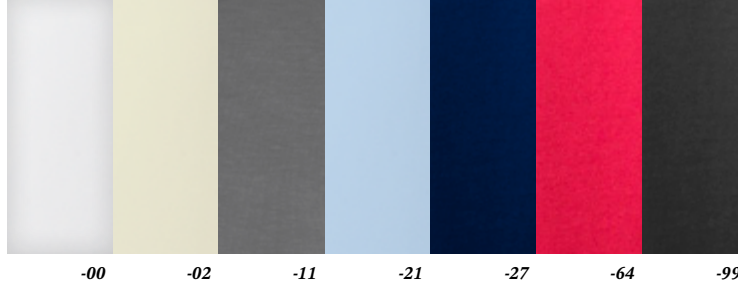
sizes. 37/38 - 49/50 **5005**  
sizes. 37/38 - 49/50 **5007**  
sizes. 37/38 - 45/46 **5008**  
sizes. 34 - 50 **6005**

*Shirts woven with double twisted yarns are called Two Ply quality, which gives wonderful colour sheen.  
Beautifully sewn and in comfortable fits. Fabric quality with Non-Iron finish.*

# TOP



- ERNST ALEXIS 2018/2019 -



16000

TOP

## LONG SLEEVE



**TOP TRICOT**

MATERIAL: 95% viscose 5% elastane. COLLAR: Round neck.

**LONG SLEEVE**

PRICE: sek 349 / nok 349 / dkk 279 / eur 38

sizes. 34 - 50

**16000**



ERNST ALEXIS

## SHORT SLEEVE



**TOP TRICOT**

MATERIAL: 95% viscose 5% elastane. COLLAR: Round neck.

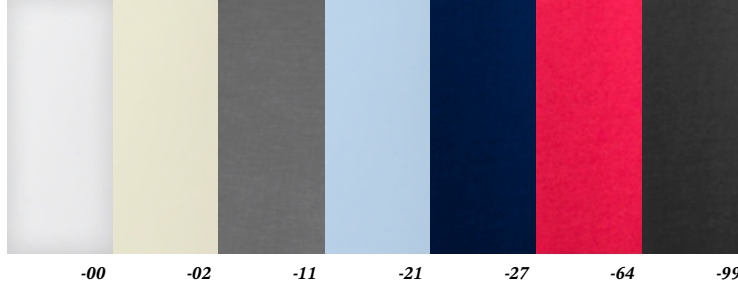
**SHORT SLEEVE**

PRICE: sek 329 / nok 329 / dkk 264 / eur 36

sizes. 34 - 50

**16005**





16005

TOP



**TOP TRICOT**

MATERIAL: 95% viscose 5% elastane. COLLAR: Round neck.

**SHORT SLEEVE**

PRICE: sek 329 / nok 329 / dkk 264 / eur 36

sizes. 34 - 50

16005



# KNIT-WEAR



- ERNST ALEXIS 2018/2019 -



19000

KNITWEAR

-11 -27 -99

100% COTTON



LADIES FIT

NEW!



**KNITWEAR ROUND NECK**

MATERIAL: 100% cotton. COLLAR: Round neck.

**GENTS FIT**

**LADIES FIT**

sizes: S - 4XL  
sizes: 34 - 50

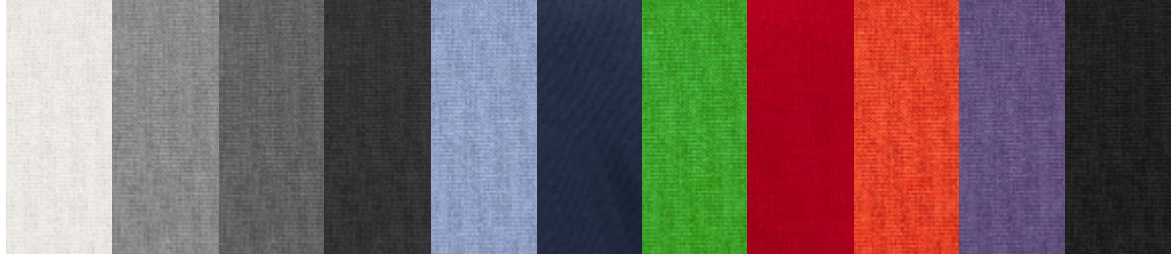
**19000**

**19005**

PRICE: sek 899 / nok 889 / dkk 719 / eur 98

18050

KNITWEAR



-02 \* -10 -11 \* -14 -21 -27 -53 -64 -85 -87 -99

100% COTTON



LADIES FIT

NEW!\*



**KNITWEAR V-NECK**  
MATERIAL: 100% cotton. COLLAR: V-neck.

**GENTS FIT**  
**LADIES FIT**

PRICE: sek 699 / nok 699 / dkk 559 / eur 76

sizes. S - 4XL  
sizes. 34 - 50

**18050**  
**18055**



-02 \* -10 -11 \* -14 -21 -27 -53 -64 -85 -87 -99

18020

KNITWEAR

# 100% COTTON



*\*NEW!*

**KNITWEAR ROUND NECK**

MATERIAL: 100% cotton. COLLAR: Round neck.

**GENTS FIT**

PRICE: sek 699 / nok 699 / dkk 559 / eur 76

sizes: S - 4XL

**18020**

# 18080

KNITWEAR



-11

-27

-64

-99

## 100% COTTON



SLIPOVER



### KNITWEAR CARDIGAN

MATERIAL: 100% cotton. COLLAR: V-neck.

DETAILS: Matching buttons on gents and mother of pearl buttons on ladies.

### GENTS FIT

PRICE: sek 799 / nok 799 / dkk 639 / eur 87

sizes. S - 4XL

18080

### SLIPOVER GENTS FIT

PRICE: sek 649 / nok 649 / dkk 519 / eur 71

sizes. S - 4XL

18053



18070

KNITWEAR

-11

-27

-64

-99

## 100% COTTON



### KNITWEAR CARDIGAN

MATERIAL: 100% cotton. COLLAR: V-neck.

DETAILS: Matching buttons on gents and mother of pearl buttons on ladies.

### LADIES FIT

sizes. 34 - 50

18070

PRICE: sek 799 / nok 799 / dkk 639 / eur 87

18060

KNITWEAR



-11 \* -25 -27 \* -33 -67 -99

# MERINO WOOL



LADIES FIT

NEW!\*



**KNITWEAR V-NECK**

MATERIAL: 100% merino wool. COLLAR: V-neck.

**GENTS FIT**

**LADIES FIT**

PRICE: sek 899 / nok 899 / dkk 719 / eur 98

sizes. S - 4XL  
sizes. 34 - 50

**18060**

**18065**

*Merino wool is a special and extra soft wool. This fine and elastic wool is spun to a fine grained worsted and is used for high quality knitted garments. The wool comes from Merino sheep, which are originally from Spain, but are now mainly in Australia and New Zealand. One of the wool's great advantages is that it is much less itchy than other wools. Merino sweaters from Ernst Alexis are knitted for exclusive and comfortable qualities. The sweaters are soft and supple and go perfectly with our shirts. Nice to wear for both work and leisure.*

ERNST ALEXIS / All our garments are manufactured using Öko-Tex Standard 100 certified fabrics and the Reach standard.





18030

KNITWEAR

-11 \* -25 -27 \* -33 -67 -99

## MERINO WOOL



*\*NEW!*

**KNITWEAR ROUND NECK**

MATERIAL: 100% merino wool. COLLAR: Round neck.

**GENTS FIT**

PRICE: sek 899 / nok 899 / dkk 719 / eur 98

sizes: XS - 4XL

**18030**

*Merino wool is a special and extra soft wool. This fine and elastic wool is spun to a fine grained worsted and is used for high quality knitted garments. The wool comes from Merino sheep, which are originally from Spain, but are now mainly in Australia and New Zealand. One of the wool's great advantages is that it is much less itchy than other wools. Merino sweaters from Ernst Alexis are knitted for exclusive and comfortable qualities. The sweaters are soft and supple and go perfectly with our shirts. Nice to wear for both work and leisure.*



ERNST ALEXIS





-11 -27 -67 -99

18075

KNITWEAR

# MERINO WOOL



NEW!

**KNITWEAR CARDIGAN**

MATERIAL: 100% merino wool. COLLAR: V-neck.  
DETAILS: Matching mother of pearl buttons.

**LADIES FIT**

PRICE: sek 999 / nok 999 / dkk 799 / eur 108

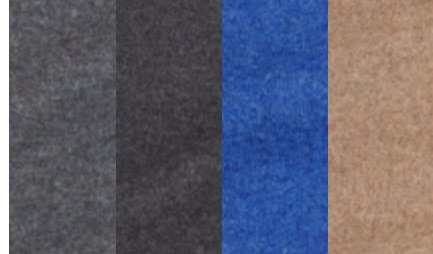
sizes. 34 - 50

18075

*Merino wool is a special and extra soft wool. This fine and elastic wool is spun to a fine grained worsted and is used for high quality knitted garments. The wool comes from Merino sheep, which are originally from Spain, but are now mainly in Australia and New Zealand. One of the wool's great advantages is that it is much less itchy than other wools. Merino sweaters from Ernst Alexis are knitted for exclusive and comfortable qualities. The sweaters are soft and supple and go perfectly with our shirts. Nice to wear for both work and leisure.*

18090

KNITWEAR



-11

-19

-25

-33

## PONCHO

**NEW!**



**KNITWEAR PONCHO**  
MATERIAL: 100% Superlamb wool.

**LADIES FIT**  
PRICE: sek 899 / nok 899 / dkk 719 / eur 98

**18090**

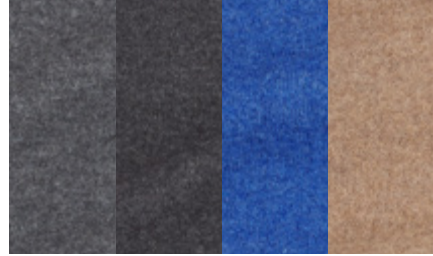
*Exclusive wool quality from the merino lamb, that originates from Spain. This fine knitted garment is produced with yarns that are spun from superlamb wool that is wool from the merino lambs first cutting. This quality is extra soft and nice to wear. The poncho fits great together with our shirts.*





ERNST ALEXIS





4060

KNITWEAR

-11

-19

-25

-33

# SCARF

NEW!



**KNITWEAR SCARF**

MATERIAL: 100% Superlamb wool.

PRICE: sek 499 / nok 499 / dkk 399 / eur 55

size. 30 X 180 CM **4060**

# ACCESSORIES



- ERNST ALEXIS 2018/2019 -





-11

-19

-25

-27

-67

-86

-99

3040

ACCESSORIES

NEW!

**TIES WOOL**

MATERIAL: 50% silk 50% wool.

**STANDARD**

sizes. 8 cm

**3040**

PRICE: sek 249 / nok 249 / dkk 199 / eur 27





**TIES SILK**

MATERIAL: 100% silk.

**STANDARD**

**SKINNY**

sizes. 9 cm

sizes. 7 cm

**3000**

**3001**

PRICE: sek 249 / nok 249 / dkk 199 / eur 27



3000

ACCESSORIES



**HANKIE SILK**  
MATERIAL: 100% silk.

**HANKIES as tie 3000**  
**HANKIES as scarf 4000**

size. 27 X 27 CM  
size. 27 X 27 CM

PRICE: sek 129 / nok 129 / dkk 103 / eur 12



**SCARF SILK**  
MATERIAL: 100% silk.

**2000**  
**2005**

**SCARF**  
PRICE: sek 249 / nok 249 / dkk 199 / eur 27

size. 160 X 24 CM

**4000**

3020

ACCESSORIES



-25

-53

-64

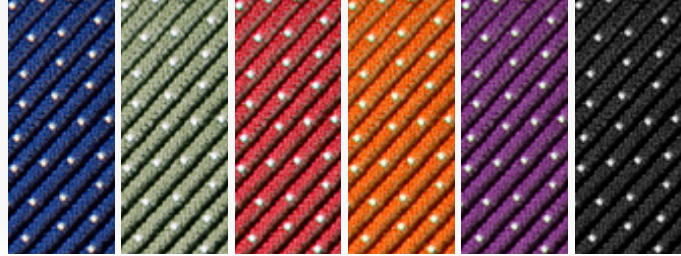
-85

# TIE



**TIES SILK**  
MATERIAL: 100% silk.

**STANDARD** sizes: 9 cm **3020**  
PRICE: sek 249 / nok 249 / dkk 199 / eur 27



-27

-55

-64

-85

-87

-99

3010

ACCESSORIES

# HANKIE / TIE



**TIES SILK**

MATERIAL: 100% silk.

**STANDARD**

sizes. 9 cm

**3010**

**SKINNY**

sizes. 7 cm

**3011**

PRICE: sek 249 / nok 249 / dkk 199 / eur 27

**HANKIE SILK**

size. 27 X 27 CM

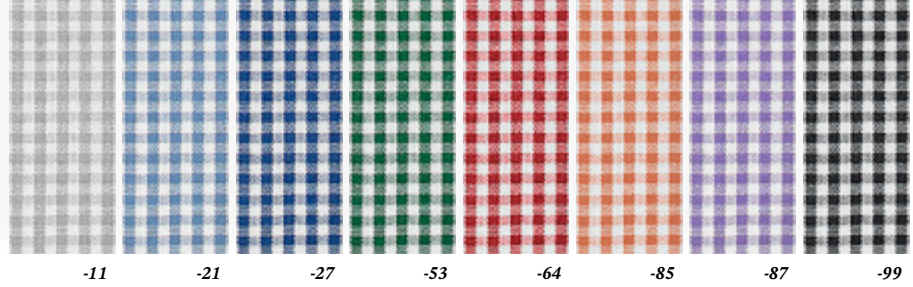
**2010**

MATERIAL: 100% silk.

PRICE: sek 129 / nok 129 / dkk 103 / eur 12

2050

ACCESSORIES



# HANKIE

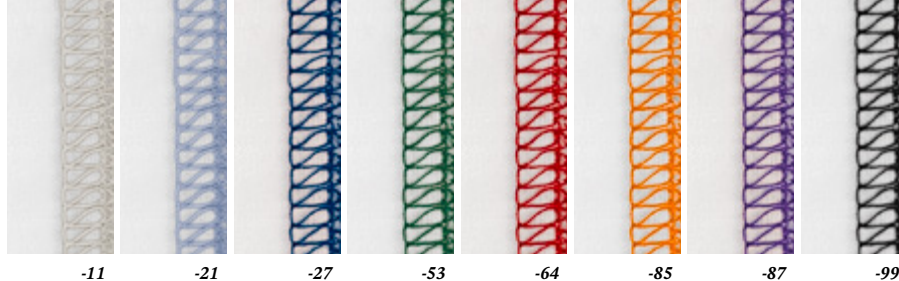


**HANKIE POPLIN**

MATERIAL: 60% cotton 40% polyester.

PRICE: sek 129 / nok 129 / dkk 103 / eur 12

sizes. 30 X 30 CM **2050**



2020

ACCESSORIES

# HANKIE



NEW!

**HANKIE POPLIN**

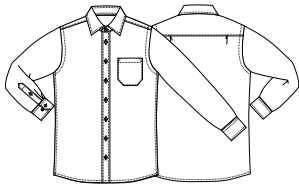
MATERIAL: 100% cotton.

sizes. 30 X 30 CM **2020**

PRICE: sek 129 / nok 129 / dkk 103 / eur 12

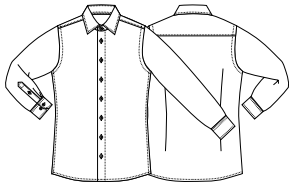
# SIZING

## CLASSIC FIT



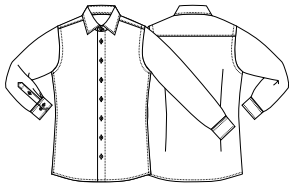
Size in cm	S 37/38	M 39/40	L 41/42	XL 43/44	XXL 45/46	3XL 47/48	4XL 49/50
<b>COLLAR</b>	38	40	42	44	46	48	50
<b>CHEST 1/2</b>	59.5	62.5	65	68	72	76	80
<b>WAIST 1/2</b>	56.5	59	62	65	68.5	73	76.5
<b>BOTTOM 1/2</b>	57.5	60.5	63.5	66	70	74	78.5
<b>CBL</b>	80	81	81.5	82.5	85.5	88	91
<b>SLEEVE LENGTH</b>	65.5	66.5	67.5	68	68.5	69	69.5

## CONTEMPORARY FIT



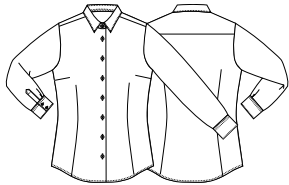
Size in cm	S 37/38	M 39/40	L 41/42	XL 43/44	XXL 45/46	3XL 47/48	4XL 49/50
<b>COLLAR</b>	38	40	42	44	46	48	50
<b>CHEST 1/2</b>	54	57	61	65	69	73	77
<b>WAIST 1/2</b>	49.5	53	57	61	65	68.5	72.5
<b>BOTTOM 1/2</b>	53	56.5	60.5	64.5	68.5	72.5	76.5
<b>CBL</b>	78.5	80.5	82	84.5	86	88	90
<b>SLEEVE LENGTH</b>	65.5	66.5	67.5	68	68.5	69.5	70.5

## SLIM FIT



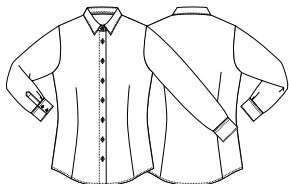
Size in cm	XS 35/36	S 37/38	M 39/40	L 41/42	XL 43/44	XXL 45/46
<b>COLLAR</b>	36	38	40	42	44	46
<b>CHEST 1/2</b>	49	52	55	58	60.5	63.5
<b>WAIST 1/2</b>	43.5	46.5	49.5	52.5	57.5	58.5
<b>BOTTOM 1/2</b>	48.5	51.5	54.5	57.5	60.5	63.5
<b>CBL</b>	77.5	78.5	79.5	80	81	82
<b>SLEEVE LENGTH</b>	64.5	65.5	66.5	67.5	68	68.5

## LADIES FIT WITH YOKE



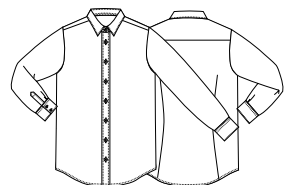
Size in cm	XS 34	S 36	M		L 42	XL		XXL	
			38	40		44	46	48	50
<b>COLLAR</b>	37.5	39	39	40.5	40.5	42	42	43.5	43.5
<b>CHEST 1/2</b>	47	48.5	50.5	52.5	54.5	56.5	58.5	61.5	64.5
<b>WAIST 1/2</b>	41	43	45	47	49	50.5	52.5	55.5	58.5
<b>BOTTOM 1/2</b>	49	50.5	52.5	54.5	56.5	58.5	60.5	63.5	66.5
<b>CBL</b>	67	68.5	69	70	70.5	72.5	73	73.5	74
<b>SLEEVE LENGTH</b>	60	60.5	61	61.5	62	62	62.5	63	63.5

## LADIES FIT WITHOUT YOKE



Size in cm	XS 34	S 36	M		L 42	XL		XXL	
			38	40		44	46	48	50
<b>COLLAR</b>	39	40.5	40.5	42	42	43.5	43.5	45	45
<b>CHEST 1/2</b>	46	48	49.5	51	53.5	55	57	60	63
<b>WAIST 1/2</b>	41	43	45	46.5	49	50.5	52.5	55.5	58.5
<b>BOTTOM 1/2</b>	48	50	51.5	53	55	57.5	59	62	65
<b>CBL</b>	65	66.5	67	68	68.5	70	70.5	71	71.5
<b>SLEEVE LENGTH</b>	59	59.5	60	60	60.5	61	61.5	61.5	62

## LADIES CASUAL FIT



Size in cm	XS 34	S 36	M		L 42	XL		XXL	
			38	40		44	46	48	50
<b>COLLAR</b>	37	38	39	40	42	43	44	45	46
<b>CHEST 1/2</b>	47	49	51	53	55	57	59	61	63
<b>WAIST 1/2</b>	44	46	48	50	52	54	56	58	60
<b>BOTTOM 1/2</b>	48	50	52	54	56	58	60	62	64
<b>CBL</b>	67	68	69	70	71	72	73	74	75
<b>SLEEVE LENGTH</b>	60.5	61	61.5	62	62.5	63	63.5	64	64.5





## CONSIDERATE CLOTHING CARE FOR LONGER LIFE AND BETTER LOOKING GARMENTS

A garment from Ernst Alexis is made to last. And, like all clothing, it will last for longer if it is cared for correctly. It is therefore important that the care instructions for each garment are followed. For example, our garments must never be tumble dried. A shirt from Ernst Alexis must always be dried on a hanger to look as attractive as possible and our knitwear must always be dried flat. If the garment has a washing symbol with a line underneath, it means that it must be washed using a gentle wash program. Some of our garments do not really need ironing, but when the care instructions have an iron symbol then the garment can be ironed.

### A FEW TIPS ABOUT CARE INSTRUCTIONS

- Look for and always follow the symbols in the care instructions for a garment before washing it.
- Wash at the right temperature. Garments washed at too high a temperature can shrink.
- Dry the clothing in the correct way.
- Iron according to the care instructions. If the iron is too hot the garment can be damaged and if ironed too cool it will not be smooth.
- Use an appropriate amount of detergent, read the detergent packaging. Use colour detergent for coloured garments and white detergent for whites.
- Wash coloured garments with other coloured garments and white garments with other whites. Sort washing by similar colours.
- Use environmentally friendly detergent and wash several garments at the same time. It is good for the environment and for the clothes.
- For tough stains, use some form of stain remover before washing.



### EXTRA CARE ADVICE KNITWEAR

- Wool garments can be washed in wool programs without spin cycle, otherwise handwashing is recommended.
- Wool garments can be washed in gentle wash programs without or only brief spin cycle.
- All knitwear must always be dried flat.

## WASHING SYMBOLS

The following are some of the most common care instructions that apply to our and other garments:

- |   |  |
|---|--|
| Handwash.                               | Do not use bleach.                                   |
| Do not wash.                            | Bleach may be used.                                  |
| Wash at 30 degrees.                     | Dry clean. Tetrachloroethylene only.                 |
| Wash at 30 degrees. <i>Gentle wash.</i> | Dry clean. Tetrachloroethylene only. <i>Gentle.</i>  |
| Wash at 40 degrees.                     | Dry clean. All dry cleaning solvents.                |
| Wash at 40 degrees. <i>Gentle wash.</i> | Dry clean. All dry cleaning solvents. <i>Gentle.</i> |
| Wash at 60 degrees.                     | Do not dry clean.                                    |
| Wash at 60 degrees. <i>Gentle wash.</i> |  |
| Wash at 95 degrees.                     |  |
| Wash at 95 degrees. <i>Gentle wash.</i> |  |
| Drip dry.                               | Do not iron.   |
| Garment should be hung to dry.          | Cool iron - set the iron to one dot.                 |
| Dry flat.                               | Warm iron - set the iron to two dots.                |
| Tumble dry.                             | Hot iron - set the iron to three dots.               |
| Do not tumble dry.                      |  |



# PRODUCT INFORMATION



## ENVIRONMENT

Our fabric suppliers follow and manufacture their fabrics according to the applicable environmental norms and directives. All our garments are manufactured using Öko-Tex Standard 100 certified fabrics and the Reach standard.

For more info about Reach: [www.kemi.se/reach](http://www.kemi.se/reach)

By association with FTI, we meet the demands of the authorities and have access to a national system for recycling of packaging.

## TYPES OF WEAVE

### DOBBY

A structural weave that is woven by a warp that moves up on the face side and creates contours that are depressions and can have different appearances.

### END ON END

A normal plain weave with alternate dark and light thread on the warp and a single coloured weft.

### OXFORD

Coarser thread and slightly looser weave where warp and weft are followed, two and two.

### PRICE INFORMATION

The prices given in the catalogue apply from August 2018 and are the recommended retail prices in SEK, NOK, DKK and EURO excluding VAT, postage and any processing. We reserve the right for colour differences between printed image and the physical product, for products selling out and to make price adjustments due to currency exchange differences, printing errors etc.

PWA's delivery regulations apply: [www.pwa.se](http://www.pwa.se)

### PINPOINT OXFORD

A mixture of oxford and poplin is woven of long fibre cotton where only the warp is coloured.

### POPLIN

A tight plain weave, where the warp has approximately twice the threadcount of the weft.

### TWILL

A weave that has a diagonal structure. Another variation of Twill is the classic herringbone structure.



ITEM. NO.	PAGE	ITEM. NO.	PAGE	ITEM. NO.	PAGE	ITEM. NO.	PAGE
2000	123	5455	42	5805	20	6560	22
2005	123	5460	40	5810	36-37	6570	94
2010	125	5465	40	5813	36-37	6580	95
2020	127	5470	41	5815	36-37	6590	88-89
2050	26, 126	5475	41	5830	72-73	6620	14
3000	122	5480	48-49	5833	72-73	6630	15
3001	122	5485	48-49	5835	72-73	6640	85
3010	125	5490	46	5840	56	6670	33
3011	125	5495	46	5843	56	6690	57
3020	124	5500	61	5845	56	6710	52-53
3040	121	5503	61	5850	35	6720	21
4000	123	5505	61	5853	35	6730	39
4060	119	5520	29	5855	35	6740	60
5005	101	5523	29	5860	66	6760	19
5007	101	5525	29	5863	66	6770	74
5008	101	5530	55	5865	66	6780	76-77
5010	69	5535	55	5890	7	6790	64-65
5013	69	5540	54	5893	7	6800	20
5040	100	5545	54	5895	7	6810	36-37
5045	100	5560	22	5900	86-87	6830	72-73
5065	97	5563	22	5903	86-87	6840	56
5068	97	5565	22	5905	86-87	6850	35
5070	96	5570	94	5930	51	6860	66
5073	96	5575	94	5933	51	6890	7
5085	9	5580	95	5935	51	6900	86-87
5087	9	5585	95	5940	63	6930	51
5090	9	5590	88-89	5943	63	6940	63
5095	16	5595	88-89	5945	63	6950	59
5097	16	5620	14	5950	59	6960	13
5098	16	5623	14	5953	59	7000	45
5100	17	5625	14	5955	59	7005	45
5102	17	5630	15	5960	13	7010	44
5103	17	5633	15	5963	13	7015	44
5105	10	5635	15	5965	13	8000	45
5106	10	5640	85	6005	101	8010	44
5115	83	5645	85	6010	69	16000	103
5118	83	5670	33	6040	100	16005	104-105
5120	83	5673	33	6065	97	18020	109
5155	79	5675	33	6070	96	18030	113
5160	79	5690	57	6085	9	18050	108
5185	71	5693	57	6095	16	18053	110
5190	71	5695	57	6100	17	18055	108
5205	90-91	5710	52-53	6105	10	18060	112
5207	90-91	5713	52-53	6106	10	18065	112
5210	90-91	5715	52-53	6110	30	18070	111
5220	98-99	5720	21	6113	31	18075	115
5223	98-99	5723	21	6115	83	18080	110
5225	98-99	5725	21	6155	79	18090	116
5260	82	5730	39	6185	71	19000	107
5265	82	5733	39	6205	90-91	19005	107
5270	23	5735	39	6220	98-99		
5273	23	5740	60	6260	82		
5275	23	5743	60	6270	23		
5300	24-25	5745	60	6300	24-25		
5305	24-25	5760	19	6310	80-81		
5310	80-81	5763	19	6350	38		
5315	80-81	5765	19	6370	27		
5350	38	5770	74	6390	92		
5355	38	5773	74	6400	43		
5370	27	5775	74	6410	68		
5375	27	5780	76-77	6450	42		
5390	92	5783	76-77	6460	40		
5395	92	5785	76-77	6470	41		
5400	43	5790	64-65	6480	48-49		
5405	43	5793	64-65	6490	46		
5410	68	5795	64-65	6500	61		
5415	68	5800	20	6530	55		
5450	42	5803	20	6540	54		



ERNST ALEXIS

[www.ernstalexis.se](http://www.ernstalexis.se)

# WE ARE SHIRT- MAKERS